

 Always Buckle Up

 Don't Drive Impaired

 Focus on the Road

 Stop on Red

 Be Pedestrian Safe

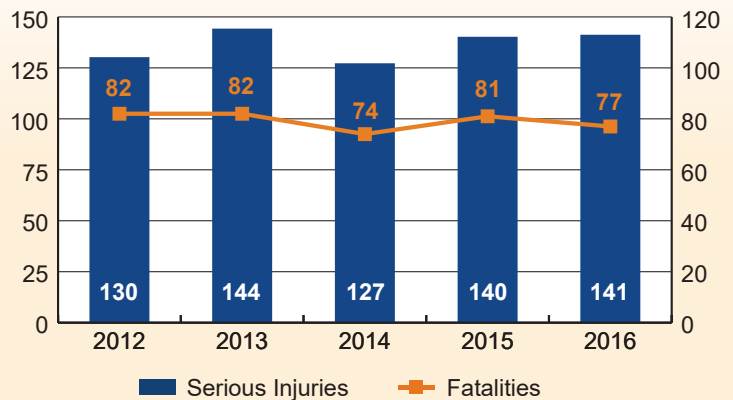
 Ride Safe



NEVADA'S IMPAIRED DRIVING PROBLEM

Between 2012 and 2016, 396 people lost their lives and 682 were seriously injured in impaired driving crashes on Nevada roadways.

The goal of the Nevada Strategic Highway Safety Plan (SHSP) is to reach zero fatalities. This fact sheet provides information on who is involved in impaired driving fatal and serious injury crashes, where and when these crashes occurred, and why they happened. It also outlines how the State plans to reduce impaired driving fatalities and serious injuries.

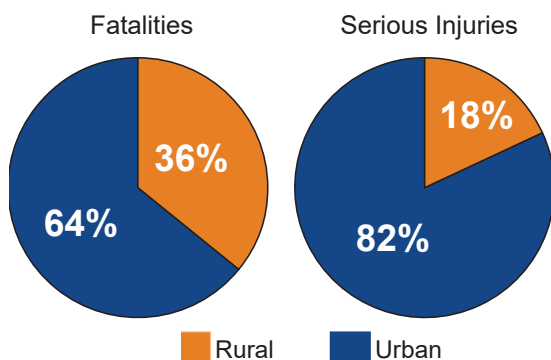


WHERE?

Between 2012 and 2016, 65% of impaired driving fatalities and serious injuries occurred in **Clark County**.

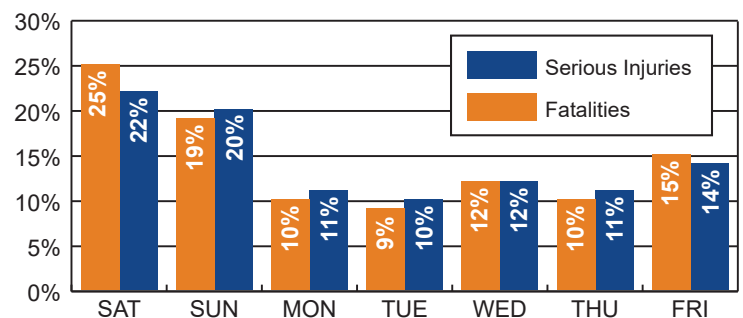
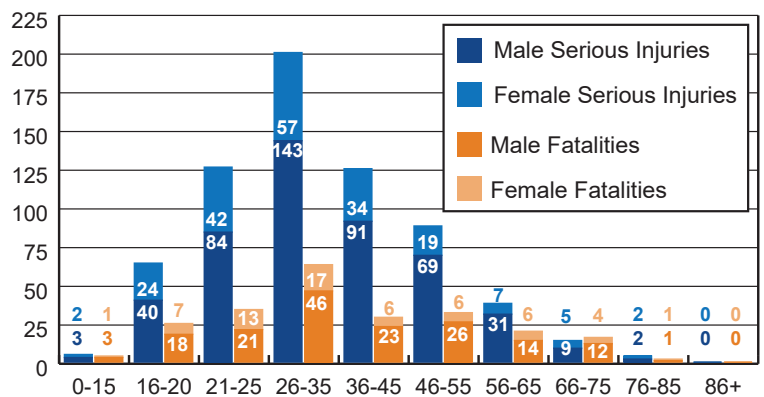


Sixty-four percent of fatalities and 82 percent of the serious injuries occurred on urban roadways.



WHO?

Male drivers aged 26 to 35 years old are involved in most impaired driving fatalities and serious injuries, followed by young male drivers aged 21 to 25 years old.



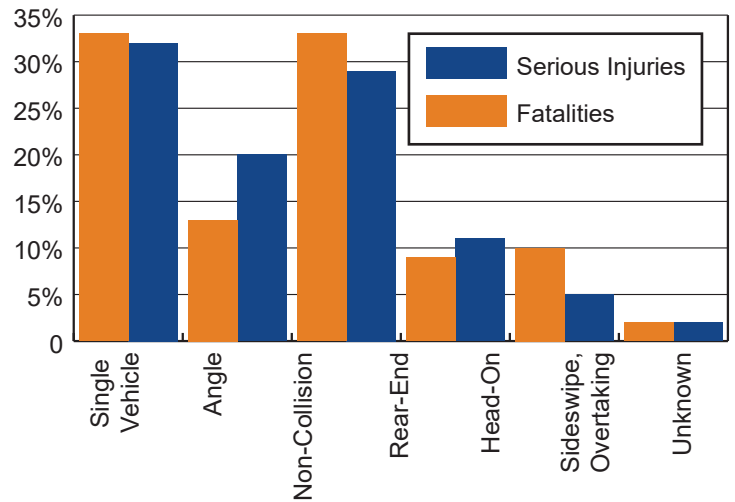
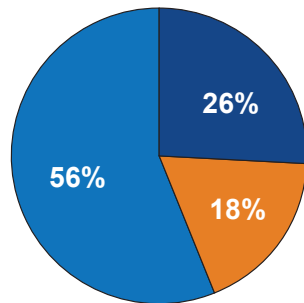
WHEN?

The highest proportion of impaired driving fatalities and serious injuries occurred during weekends.

WHY?

Two-thirds of the impaired fatalities occurred in single vehicle crashes and non-collision crashes combined. A large portion of the impaired driving serious injuries occurred in single vehicle crashes followed closely by non-collision crashes.

- Pedestrian
- Fixed Object
- Overturn



HOW DO WE REACH OUR GOAL?

CRITICAL STRATEGIES TO REDUCE IMPAIRED DRIVING

The Nevada SHSP identified several strategies that have the greatest potential to reduce impaired driving fatalities and serious injury crashes. By focusing on these strategies we can begin to reduce the terrible toll caused by impaired driving.

Maximize DUI enforcement through training, coordination, education, and funding:

- » Increase support among law enforcement agencies for high visibility DUI enforcement programs.
- » Conduct refresher training programs on sobriety testing through SFST/ARIDE programs.
- » Determine high crash locations/corridors for impaired driving and target unsafe driving behaviors with engineering, enforcement, and public awareness strategies.
- » Improve the current cumbersome DUI reporting process by reducing the time required by officers to complete the report.

Aggressively reduce impaired driving through educational campaigns, training, and events:

- » Enhance DUI education within existing safe driving programs through outreach events to communities, schools, and associations.
- » Monitor and support (1) compliance check programs to reduce youth access to alcohol and (2) increase training opportunities for servers to recognize signs of intoxication and methods to reduce excessive drinking.
- » Expand NHP's DRIVE youth program and the Zero Teen Fatality program through additional funding and promotion.

Eliminate repeat DUI offenses through successful existing programs and innovative new programs:

- » Develop a sustained statewide recidivism program such as 24/7 through pilot programs, providing information and data showing effectiveness. Identify key people to discuss and provide information in an effort to recruit champions among law enforcement, judges, prosecutors, and legislators. Research the effectiveness of misdemeanor and felony diversion programs requiring ignition interlock installation.
- » Survey Victim Impact Panels and coordinate with DMV to provide an annual repeat offender report and investigate the possibility of going back five to ten years to track historical progress to determine percentage of repeat offenders.

Understand and address the increase in "under the influence of other substances" crashes:

- » Research the effects of legalized marijuana use on impaired driving crashes and identify methods to capture Nevada specific marijuana impaired driving data.
- » Research the severity and number of other drug impaired crashes such as prescription drugs and heroin. Identify methods to capture Nevada specific data.