

NEVADA STATEWIDE MONTHLY FATAL REPORT



Zero Fatalities
Lives are on the Line

Date of Report: 12/8/2025

Current Reporting Period: January 1, 2025 - November 30, 2025

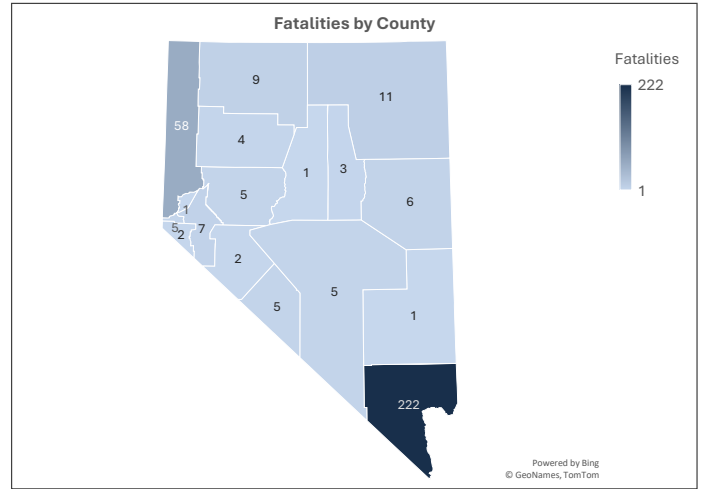
This report is compiled by the Office of Traffic Safety and includes detailed statistics on traffic fatalities in Nevada. The report breaks crash data down by behavior, county, and year-over-year changes, and includes monthly data, year-to-date data, and previous year data. The report aims to provide accurate data to help improve road safety and inform policy decisions while ensuring compliance with federal reporting requirements set by the National Highway Traffic Safety Administration (NHTSA).

[For more detailed information on traffic fatalities and the behaviors causing them, please refer to the Nevada Fatal Crash Dashboard.](#)

Data as of: November 30, 2025

Crash Comparison by Month - Current Reporting Period

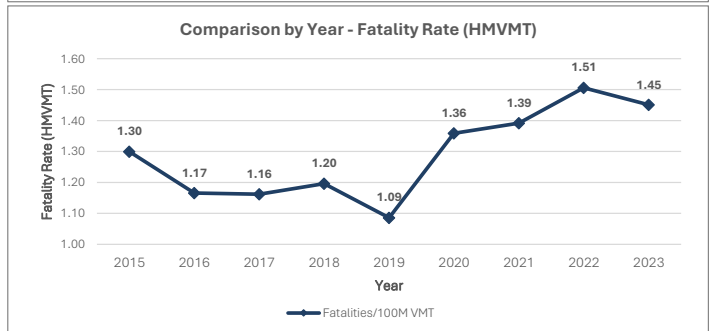
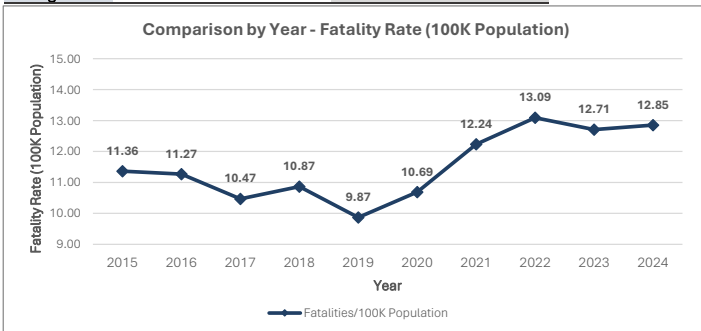
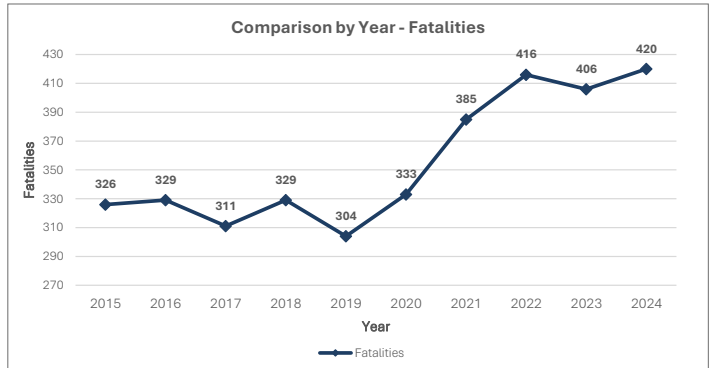
<p>2025 Fatal Crashes During Current Reporting Period</p> <p>327 -6.30% % Change from 2024</p>	<p>2025 Fatalities During Current Reporting Period</p> <p>347 -10.34% % Change from 2024</p>
---	---



Month	2024 Fatal Crashes	2025 Fatal Crashes	% Change	2024 Fatalities	2025 Fatalities	% Change
January	39	38	-2.56%	42	39	-7.14%
February	18	31	72.22%	20	32	60.00%
March	34	26	-23.53%	40	29	-27.50%
April	29	39	34.48%	36	39	8.33%
May	38	24	-36.84%	43	27	-37.21%
June	33	30	-9.09%	35	34	-2.86%
July	26	29	11.54%	29	30	3.45%
August	27	27	0.00%	27	30	11.11%
September	26	26	0.00%	29	27	-6.90%
October	37	23	-37.84%	40	24	-40.00%
November	42	34	-19.05%	46	36	-21.74%
December	0	0	0.00%	0	0	0.00%
Reporting Period Total	349	327	-6.30%	387	347	-10.34%
Year End Total	381			420		

10-Year Historical Crash Comparison

Year	Fatalities	Serious Injuries	Fatality Rate (Population)	Fatality Rate (HMVMT)*
2015	326	1,333	11.36	1.30
2016	329	1,267	11.27	1.17
2017	311	1,086	10.47	1.16
2018	329	893	10.87	1.20
2019	304	982	9.87	1.09
2020	333	964	10.69	1.36
2021	385	1,097	12.24	1.39
2022	416	1,130	13.09	1.51
2023	406	1,176	12.71	1.45
2024	420	N/A	12.85	1.45
10-Year Total	3,559	9,928		
10-Year Average	355.9	1,103.1		



HMVMT refers to "100 million vehicle miles traveled" and is the total number of miles traveled by all vehicles statewide, aggregated to units of 100 million miles.

Continue to Page 2 for an additional breakdown of crashes by driver behavior, vehicle type, and road user.

NEVADA STATEWIDE MONTHLY FATAL REPORT



Zero Fatalities
Lives are on the Line

Crash Comparison by County - Current Reporting Period

County	2024 Fatal Crashes	2025 Fatal Crashes	% Change	2024 Fatalities	2025 Fatalities	% Change	2024 Vehicle Occupants	2025 Vehicle Occupants	% Change	2024 Unrestrained	2025 Unrestrained	% Change
Clark	248	214	-13.71%	273	222	-18.68%	109	81	-25.69%	31	32	3.23%
Washoe	42	52	23.81%	46	58	26.09%	19	27	42.11%	8	11	37.50%
Lyon	10	6	-40.00%	11	7	-36.36%	10	5	-50.00%	2	0	-100.00%
Carson City	2	5	150.00%	3	5	66.67%	2	3	50.00%	0	2	200.00%
Nye	10	5	-50.00%	10	5	-50.00%	6	4	-33.33%	3	1	-66.67%
Elko	13	11	-15.38%	15	11	-26.67%	15	7	-53.33%	6	5	-16.67%
Douglas	2	2	0.00%	2	2	0.00%	1	2	100.00%	0	0	0.00%
Churchill	0	5	500.00%	0	5	500.00%	0	4	400.00%	0	2	200.00%
Humboldt	3	7	133.33%	3	9	200.00%	2	5	150.00%	0	2	200.00%
White Pine	2	5	150.00%	5	6	20.00%	5	4	-20.00%	0	2	200.00%
Pershing	4	4	0.00%	4	4	0.00%	4	4	0.00%	1	1	0.00%
Lander	3	1	-66.67%	3	1	-66.67%	2	1	-50.00%	1	0	-100.00%
Mineral	2	2	0.00%	2	2	0.00%	2	2	0.00%	0	1	100.00%
Lincoln	1	1	0.00%	1	1	0.00%	1	1	0.00%	1	0	-100.00%
Storey	3	1	-66.67%	3	1	-66.67%	2	1	-50.00%	1	0	-100.00%
Eureka	1	3	200.00%	1	3	200.00%	1	3	200.00%	0	1	100.00%
Esmeralda	3	3	0.00%	5	5	0.00%	1	4	300.00%	0	0	0.00%
Reporting Period Total	349	327	-6.30%	387	347	-10.34%	182	158	-13.19%	54	60	11.11%
Year End Total	381			420			200			64		

Vulnerable Road User and Motorcyclist Fatalities - Current Reporting Period

County	2024 Pedestrian	2025 Pedestrian	% Change	2024 Bicycle	2025 Bicycle	% Change	2024 Motorcycle	2025 Motorcycle	% Change	2024 Other Scooter, Moped, ATV	2025 Other Scooter, Moped, ATV	% Change
Clark	90	75	-16.67%	10	12	20.00%	59	53	-10.17%	5	1	-80.00%
Washoe	12	16	33.33%	3	3	0.00%	12	11	-8.33%	0	1	100.00%
Lyon	1	0	-100.00%	0	0	0.00%	0	2	200.00%	0	0	0.00%
Carson City	1	1	0.00%	0	0	0.00%	0	1	100.00%	0	0	0.00%
Nye	1	1	0.00%	0	0	0.00%	3	0	-100.00%	0	0	0.00%
Elko	0	0	0.00%	0	0	0.00%	0	3	300.00%	0	1	100.00%
Douglas	0	0	0.00%	1	0	-100.00%	0	0	0.00%	0	0	0.00%
Churchill	0	0	0.00%	0	0	0.00%	0	1	100.00%	0	0	0.00%
Humboldt	1	3	200.00%	0	0	0.00%	0	1	100.00%	0	0	0.00%
White Pine	0	0	0.00%	0	0	0.00%	0	2	200.00%	0	0	0.00%
Pershing	0	0	0.00%	0	0	0.00%	0	0	0.00%	0	0	0.00%
Lander	0	0	0.00%	0	0	0.00%	1	0	-100.00%	0	0	0.00%
Mineral	0	0	0.00%	0	0	0.00%	0	0	0.00%	0	0	0.00%
Lincoln	0	0	0.00%	0	0	0.00%	0	0	0.00%	0	0	0.00%
Storey	0	0	0.00%	0	0	0.00%	0	0	0.00%	1	0	-100.00%
Eureka	0	0	0.00%	0	0	0.00%	0	0	0.00%	0	0	0.00%
Esmeralda	0	1	100.00%	0	0	0.00%	4	0	-100.00%	0	0	0.00%
Reporting Period Total	106	97	-8.49%	14	15	7.14%	79	74	-6.33%	6	3	-50.00%
Year End Total	114			16			83			7		

KEY

- Fatalities:** Total number of reported deaths (vehicle occupants, pedestrian, motorcyclist, bicyclist, and other).
- Vehicle Occupants:** Driver and occupant fatalities in a motor vehicle.
- Unrestrained:** Driver and occupant fatalities in a motor vehicle unrestrained.
- Pedestrian:** Any person on foot, on a personal conveyance, or in a building.
- Bicyclist:** A person on an other road vehicle that can be propelled by pedaling (bicycle, tricycle, unicycle, pedal car, electric bike).
- Motorcyclist:** A person riding any motor vehicle that has a seat or saddle for the use of its operator and is designed to travel on not more than three wheels in contact with the ground.
- Other:** A person on a scooter, moped, ATV, or other motorized vehicle not captured above on a roadway.
- 100 Million Vehicle Miles Traveled (HMVMT):** The total distance driven by all vehicles statewide, aggregated to units of 100 million miles.

DISCLAIMER

This report is a point in time comparison.
 This data does not include data fields marked by the officer as unknown.
 2024 data is preliminary and does not necessarily include final reports (Form 5, coroner, and/or toxicology).
 2024 data is not final until FARS release in 2026. 2025 data is not final until FARS release in 2027.
 2024 VMT data is not available until 2025.
 Note: The monthly report will be distributed by the 7th of each month.

SOURCES

State Fatal Crash Data, Office of Traffic Safety
 Population Data, United States Census Bureau
 VMT Data, NDOT