

NEVADA STATEWIDE MONTHLY FATAL REPORT



Zero Fatalities
Lives are on the Line

Date of Report: 5/7/2025

Current Reporting Period: January 1, 2025 - April 30, 2025

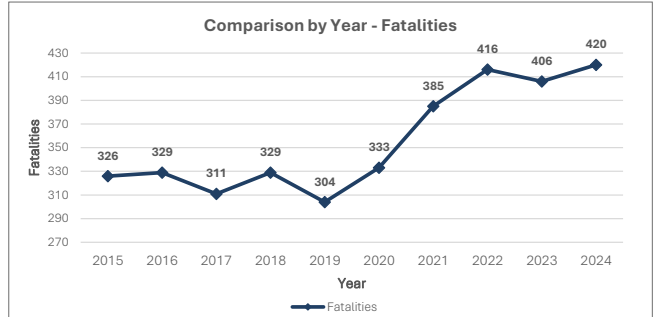
This report is compiled by the Office of Traffic Safety and includes detailed statistics on traffic fatalities in Nevada. The report breaks crash data down by behavior, county, and year-over-year changes, and includes monthly data, year-to-date data, and previous year data. The report aims to provide accurate data to help improve road safety and inform policy decisions while ensuring compliance with federal reporting requirements set by the National Highway Traffic Safety Administration (NHTSA).

[For more detailed information on traffic fatalities and the behaviors causing them, please refer to the Nevada Fatal Crash Dashboard.](#)

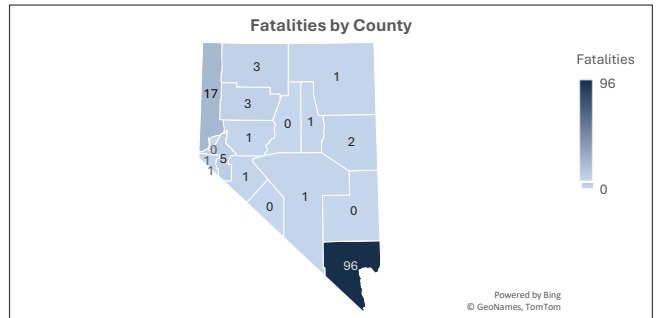
Data as of: April 30, 2025

Crash Comparison by Month - Current Reporting Period

<p>2025 Fatal Crashes During Current Reporting Period</p> <p>128 +7.56% % Change from 2024</p>	<p>2025 Fatalities During Current Reporting Period</p> <p>133 -2.92% % Change from 2024</p>
---	--



Month	2024 Fatal Crashes	2025 Fatal Crashes	% Change	2024 Fatalities	2025 Fatalities	% Change
January	39	39	0.00%	42	40	-4.76%
February	17	31	82.35%	19	32	68.42%
March	34	26	-23.53%	40	29	-27.50%
April	29	32	10.34%	36	32	-11.11%
May	0	0	0.00%	0	0	0.00%
June	0	0	0.00%	0	0	0.00%
July	0	0	0.00%	0	0	0.00%
August	0	0	0.00%	0	0	0.00%
September	0	0	0.00%	0	0	0.00%
October	0	0	0.00%	0	0	0.00%
November	0	0	0.00%	0	0	0.00%
December	0	0	0.00%	0	0	0.00%
Reporting Period Total	119	128	7.56%	137	133	-2.92%
Year End Total	119			137		



Crash Comparison by County - Current Reporting Period

County	2024 Fatal Crashes	2025 Fatal Crashes	% Change	2024 Fatalities	2025 Fatalities	% Change	2024 Vehicle Occupants	2025 Vehicle Occupants	% Change	2024 Unrestrained	2025 Unrestrained	% Change
Clark	96	94	-2.08%	111	96	-13.51%	44	32	-27.27%	16	15	-6.25%
Washoe	9	16	77.78%	10	17	70.00%	5	9	80.00%	2	2	0.00%
Lyon	3	4	33.33%	3	5	66.67%	2	4	100.00%	0	0	0.00%
Carson City	2	1	-50.00%	3	1	-66.67%	2	1	-50.00%	0	1	100.00%
Nye	3	1	-66.67%	3	1	-66.67%	3	1	-66.67%	2	0	-100.00%
Elko	3	1	-66.67%	4	1	-75.00%	4	1	-75.00%	1	0	-100.00%
Douglas	1	1	0.00%	1	1	0.00%	1	1	0.00%	0	0	0.00%
Churchill	0	1	100.00%	0	1	100.00%	0	1	100.00%	0	0	0.00%
Humboldt	2	2	0.00%	2	3	50.00%	2	1	-50.00%	0	1	100.00%
White Pine	0	2	200.00%	0	2	200.00%	0	1	100.00%	0	0	0.00%
Pershing	0	3	300.00%	0	3	300.00%	0	3	300.00%	0	1	100.00%
Lander	0	0	0.00%	0	0	0.00%	0	0	0.00%	0	0	0.00%
Mineral	0	1	100.00%	0	1	100.00%	0	1	100.00%	0	1	100.00%
Lincoln	0	0	0.00%	0	0	0.00%	0	0	0.00%	0	0	0.00%
Storey	0	0	0.00%	0	0	0.00%	0	0	0.00%	0	0	0.00%
Eureka	0	1	100.00%	0	1	100.00%	0	1	100.00%	0	1	100.00%
Esmeralda	0	0	0.00%	0	0	0.00%	0	0	0.00%	0	0	0.00%
Reporting Period Total	119	128	7.56%	137	133	-2.92%	63	57	-9.52%	21	22	4.76%
Year End Total	381			420			202			66		

Continue to Page 2 for an additional breakdown of crashes by behavior, followed by a ten-year historical comparison of fatality rate (HMVMT and 100K Population).

NEVADA STATEWIDE MONTHLY FATAL REPORT



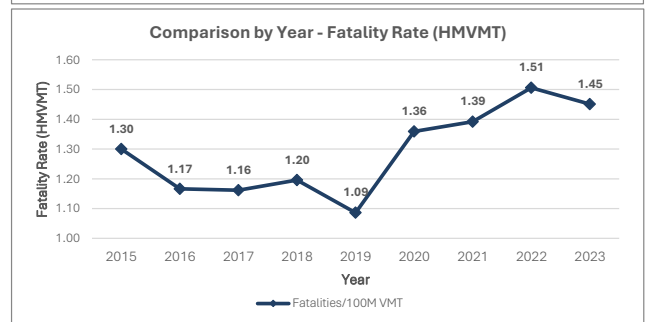
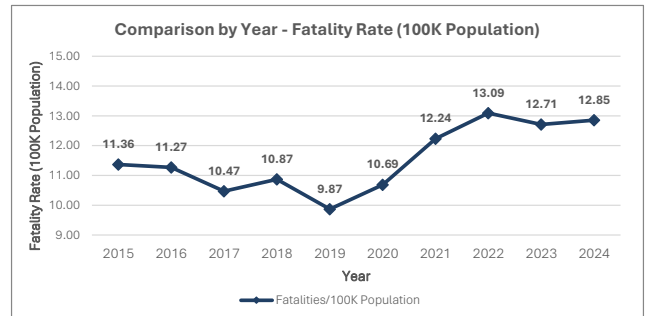
Zero Fatalities
Lives are on the Line

Vulnerable Road User and Motorcyclist Fatalities - Current Reporting Period

County	2024	2025	% Change	2024 Bicycle	2025 Bicycle	% Change	2024	2025	% Change	2024 Other	2025 Other	% Change
	Pedestrian	Pedestrian		Motorcycle	Motorcycle		Scooter, Moped, ATV	Scooter, Moped, ATV				
Clark	42	31	-26.19%	3	7	133.33%	20	25	25.00%	2	0	-100.00%
Washoe	2	3	50.00%	0	0	0.00%	3	5	66.67%	0	0	0.00%
Lyon	1	0	-100.00%	0	0	0.00%	0	1	100.00%	0	0	0.00%
Carson City	1	0	-100.00%	0	0	0.00%	0	0	0.00%	0	0	0.00%
Nye	0	0	0.00%	0	0	0.00%	0	0	0.00%	0	0	0.00%
Elko	0	0	0.00%	0	0	0.00%	0	0	0.00%	0	0	0.00%
Douglas	0	0	0.00%	0	0	0.00%	0	0	0.00%	0	0	0.00%
Churchill	0	0	0.00%	0	0	0.00%	0	0	0.00%	0	0	0.00%
Humboldt	0	2	200.00%	0	0	0.00%	0	0	0.00%	0	0	0.00%
White Pine	0	0	0.00%	0	0	0.00%	0	1	100.00%	0	0	0.00%
Pershing	0	0	0.00%	0	0	0.00%	0	0	0.00%	0	0	0.00%
Lander	0	0	0.00%	0	0	0.00%	0	0	0.00%	0	0	0.00%
Mineral	0	0	0.00%	0	0	0.00%	0	0	0.00%	0	0	0.00%
Lincoln	0	0	0.00%	0	0	0.00%	0	0	0.00%	0	0	0.00%
Storey	0	0	0.00%	0	0	0.00%	0	0	0.00%	0	0	0.00%
Eureka	0	0	0.00%	0	0	0.00%	0	0	0.00%	0	0	0.00%
Esmeralda	0	0	0.00%	0	0	0.00%	0	0	0.00%	0	0	0.00%
Reporting Period Total	46	36	-14.29%	3	7	133.33%	23	32	39.13%	2	0	-100.00%
Year End Total	113			15			83			7		

10-Year Historical Crash Comparison

Year	Fatalities	Serious Injuries	Population	HMVMT
2015	326	1,333	2,868,531	250,789
2016	329	1,267	2,919,555	282,141
2017	311	1,086	2,969,900	267,641
2018	329	893	3,027,300	275,103
2019	304	982	3,080,200	279,938
2020	333	964	3,115,840	245,055
2021	385	1,097	3,146,632	276,617
2022	416	1,130	3,177,421	276,238
2023	406	1,176	3,194,176	279,845
2024	420	N/A	3,267,467	0,000
10-Year Total	3,559	9,928		
10-Year Average	355.9	1,103.1		



DISCLAIMER: THIS REPORT IS A POINT IN TIME COMPARISON. THIS DATA DOES NOT INCLUDE DATA FIELDS MARKED BY THE OFFICER AS UNKNOWN. 2024 DATA IS PRELIMINARY AND DOES NOT NECESSARILY INCLUDE FINAL REPORTS (FORM 5, CORONER, AND/OR TOXICOLOGY). 2024 DATA IS NOT FINAL UNTIL FARS RELEASE IN 2026. 2025 DATA IS NOT FINAL UNTIL FARS RELEASE IN 2027. 2024 VMT DATA IS NOT AVAILABLE UNTIL 2025. NOTE: THE MONTHLY REPORT WILL BE DISTRIBUTED BY THE 7TH OF EACH MONTH.

KEY

- Fatalities:** Total number of reported deaths (vehicle occupants, pedestrian, motorcyclist, bicyclist, and other).
- Vehicle Occupants:** Driver and occupant fatalities in a motor vehicle.
- Vehicle Unrestrained:** Driver and occupant fatalities in a motor vehicle unrestrained.
- Pedestrian:** Any person on foot, on a personal conveyance, or in a building.
- Bicyclist:** A person on an other road vehicle that can be propelled by pedaling (bicycle, tricycle, unicycle, pedal car, electric bike).
- Motorcyclist:** A person riding any motor vehicle that has a seat or saddle for the use of its operator and is designed to travel on not more than three wheels in contact with the ground.
- Other:** A person on a scooter, moped, ATV, or other motorized vehicle not captured above on a roadway.
- 100 Million Vehicle Miles Traveled (HMVMT):** The total distance driven by all vehicles statewide, scaled to units of 100 million miles.

SOURCES

State Fatal Crash Data, Office of Traffic Safety
Population Data, United States Census Bureau
VMT Data, NDOT