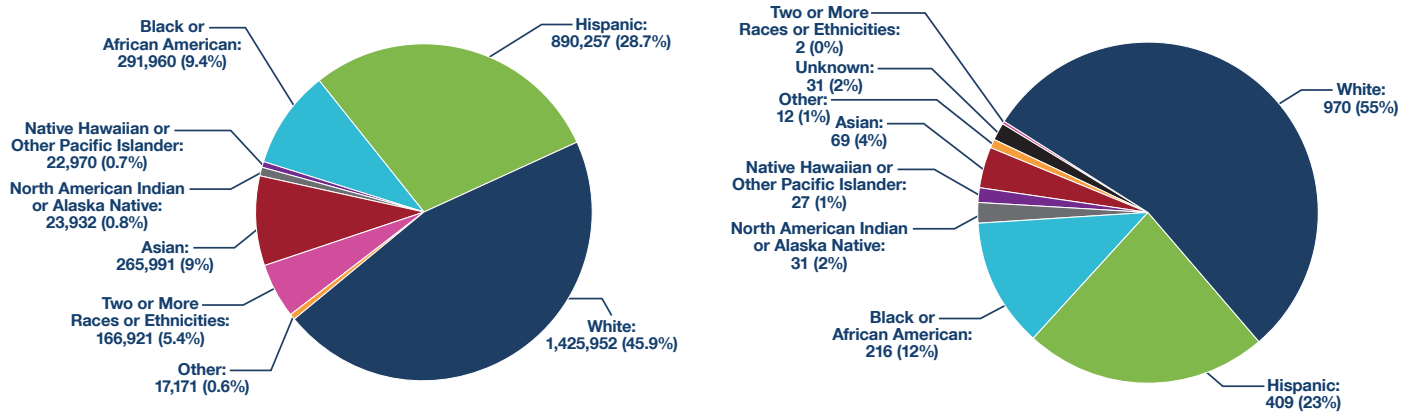


Racial Equity in Traffic Fatalities in Nevada

From 2018 to 2022, there were 1,767 traffic fatalities in Nevada. This summary focuses on racial and ethnic disparities of those fatalities to identify focal points for strategic intervention. The data used stems from the US Census Bureau American Community Survey (ACS) and Fatality Analysis Reporting System (FARS) data. The figures below show racial and ethnic population distributions in Nevada, with a breakdown of traffic fatalities experienced by members of each race or ethnicity over the five-year period.

Distribution of Nevada Population and Traffic Fatalities by Race/Ethnicity (2018-2022)



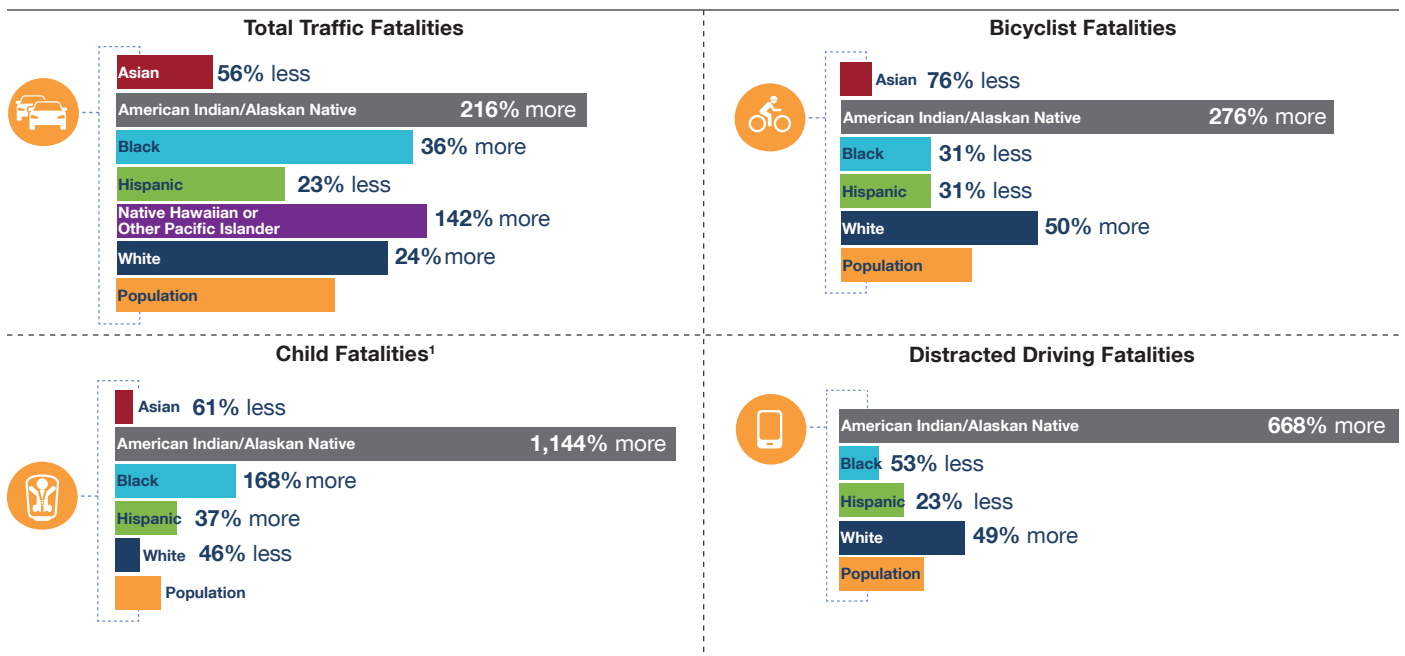
Number and Percent of State Population

Number and Percent of Fatalities By Race



The following figures present a comparison of traffic fatality rates across various racial or ethnic groups relative to Nevada's total population.

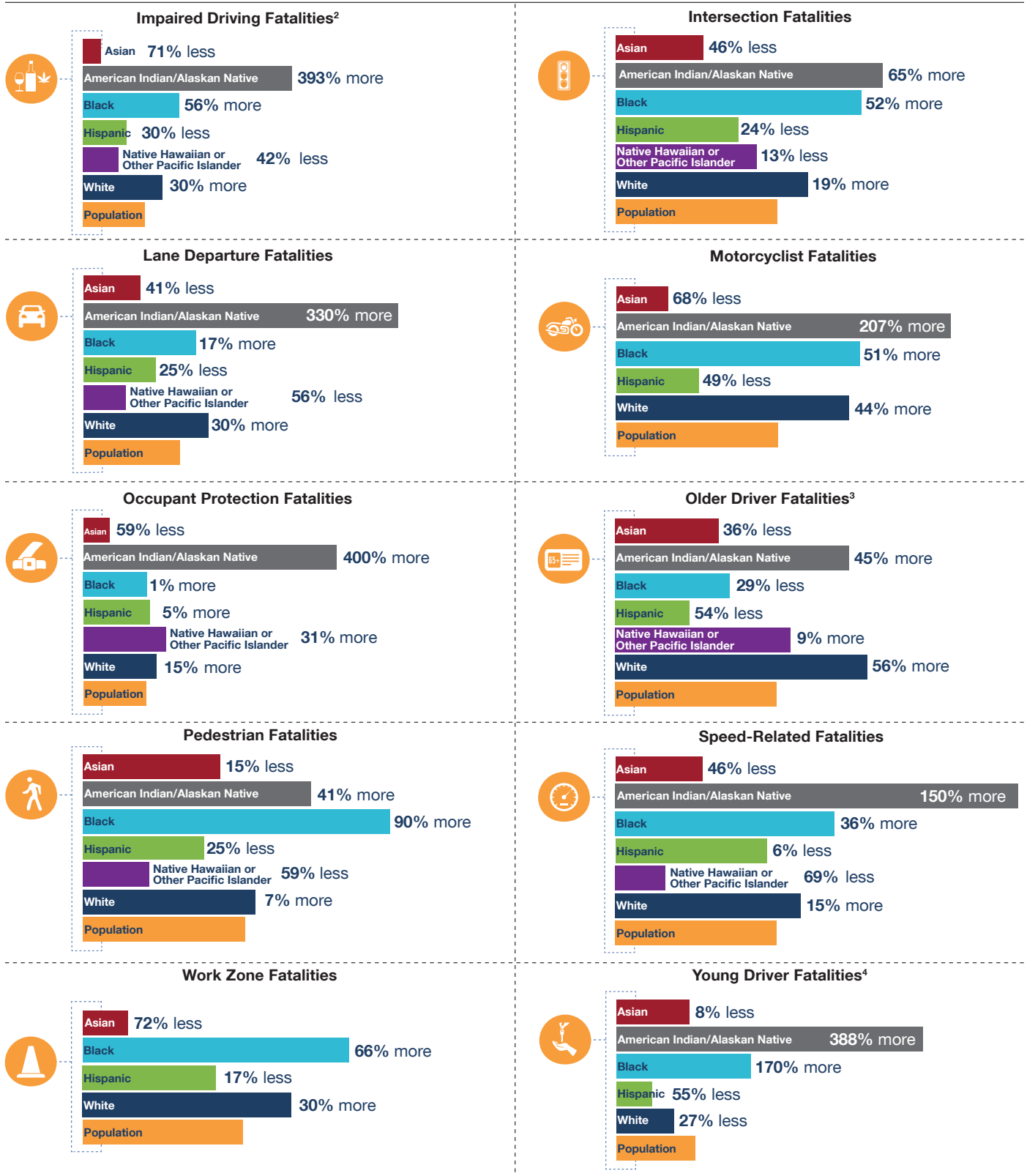
Fatality Rate by Race/Ethnicity Compared to Fatality Rate of Total Population (Comparison of Fatality Rate by Population (Overall, Nevada's Critical Emphasis Areas))



¹ Child Passengers: Child age 13 or younger died in the crash	² Impaired Driving: Driver either intoxicated by alcohol (BAC=0.08 or greater) or tested positive for one or more drugs	³ Older Driver: One or more of the motor vehicles involved in the crash had a driver age 65 or older	⁴ Young Driver: One or more of the motor vehicles in the crash had a driver age 15 to 20
--	--	---	---

"Two or more," "Other," or "Unknown" not included
 Data Source: US Census Bureau American Community Survey (ACS) and FARS (2018-2022)
 The race/ethnic groups presented above summarize groups that could be consistently compared across the different data sets.

Fatality Rate by Race/Ethnicity Compared to Fatality Rate of Total Population (Comparison of Fatality Rate by Population (Overall, Nevada's Critical Emphasis Areas)) (cont.)



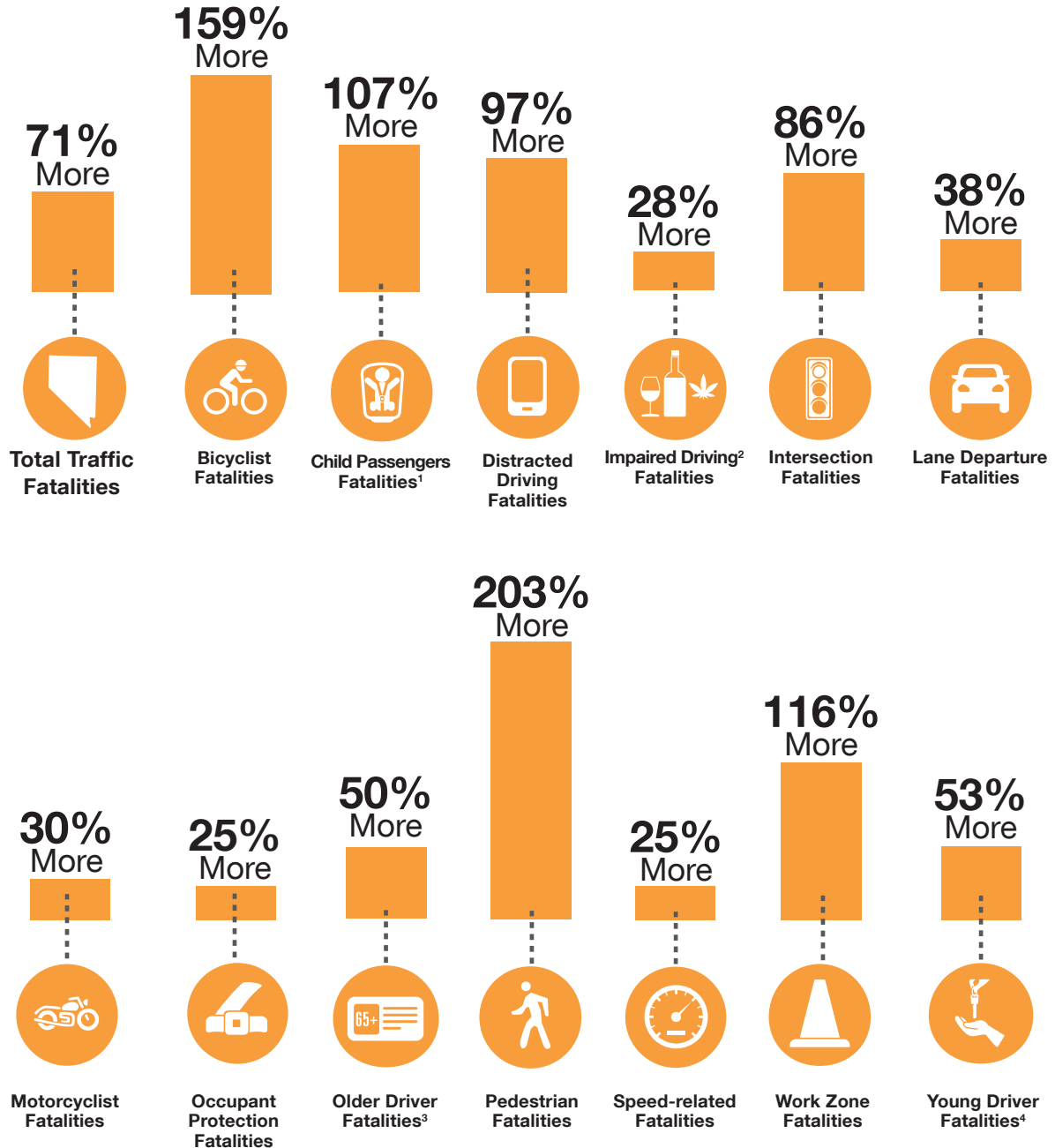
¹Child Passengers: Child age 13 or younger died in the crash	²Impaired Driving: Driver either intoxicated by alcohol (BAC=0.08 or greater) or tested positive for one or more drugs	³Older Driver: One or more of the motor vehicles involved in the crash had a driver age 65 or older	⁴Young Driver: One or more of the motor vehicles in the crash had a driver age 15 to 20
---	---	--	--

"Two or more," "Other," or "Unknown" not included
 Data Source: US Census Bureau American Community Survey (ACS) and FARS (2018-2022)
 The race/ethnic groups presented above summarize groups that could be consistently compared across the different data sets.

Income Equity in Traffic Fatalities in Nevada

The following section compares the rate of traffic fatalities occurring in lower income communities with the rate of traffic fatalities occurring in higher income communities using US Census Bureau ACS and FARS data. The figures below summarize the increased fatality rates in census block groups with a median household income of less than \$50,000, compared to census block groups exceeding a median household income of \$50,000.

Increased Rate of Fatalities for Census Block Groups with Household Income Less than \$50,000 Compared to Income Greater than \$50,000



¹Child Passengers:
Child age 13 or younger died in the crash

²Impaired Driving:
Driver either intoxicated by alcohol (BAC=0.08 or greater) or tested positive for one or more drugs

³Older Driver:
One or more of the motor vehicles involved in the crash had a driver age 65 or older

⁴Young Driver:
One or more of the motor vehicles in the crash had a driver age 15 to 20

Data Source: ACS collected by U.S. Census Bureau, FARS

Income data is available for the Census Block Groups where a traffic fatality occurred and not the individual (i.e., this data represents the income information of the Census Block Groups where crashes occurred and not the income of the crash victim.)

The ACS Five-Year Estimates for 2020 were used to determine per-capita fatality rates.