



YOUNG DRIVER CRASHES

11.0% of Nevada's total fatalities.

A young driver crash is a crash in which at least one driver is between the ages of 15 and 20, regardless of fault. The FARS data uses the attribute “person type” in the person data file to determine if the person was the driver and “age” in the person data file to determine the age of the driver. For this analysis, the two attribute codes that were used were “driver of a motor vehicle in transport” to indicate the person was the driver and age values of 15 to 20 to designate the specified age range. If a crash reported both attributes, the crash was deemed a fatal young driver crash.

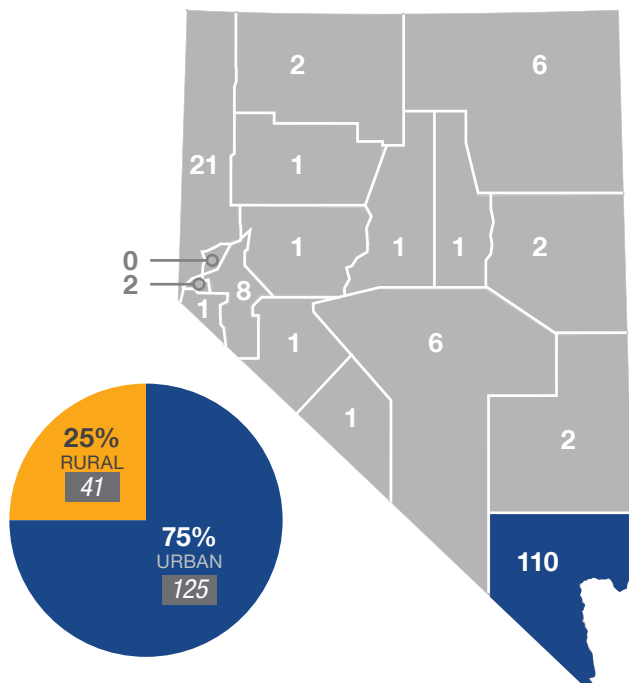
What?

During 2014 to 2018, the number of young driver crash fatalities and fatal crashes in Nevada generally decreased. There were a total of **175 fatalities and 166 fatal young driver crashes**.

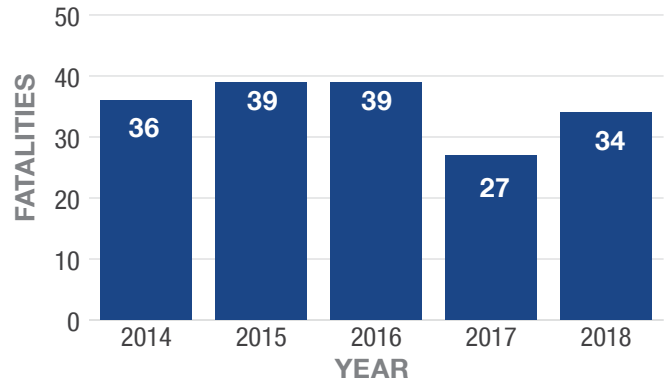
Where?

Between 2014 and 2018, 75% of young drivers involved in fatal crashes occurred on urban roadways. Clark County reported the highest number of fatal young driver crashes.

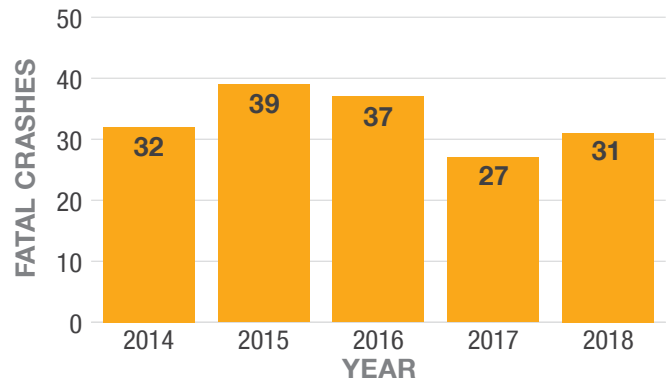
Location of Fatal Young Driver Crashes



Young Driver Crash Fatalities*



Young Driver Fatal Crashes



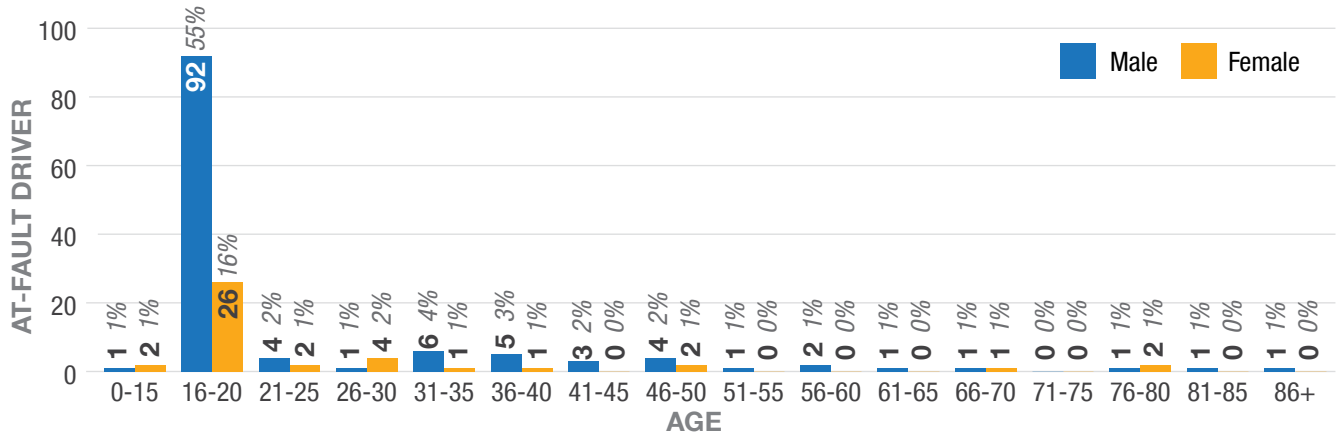
*This chart has been modified to match the NHTSA STSI summary



Who?

Between 2014 and 2018, young males (16 to 20 years old) were the highest reported age group of at-fault drivers in fatal young driver crashes.

Age/Gender Breakdown of At-Fault Driver in Fatal Young Driver Crashes

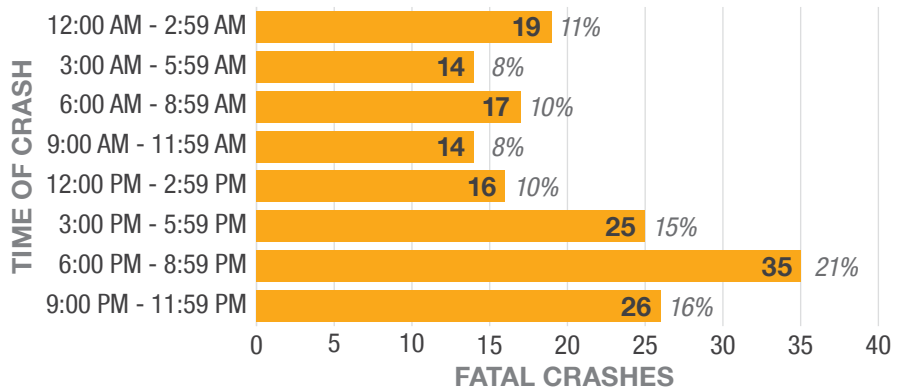


When?

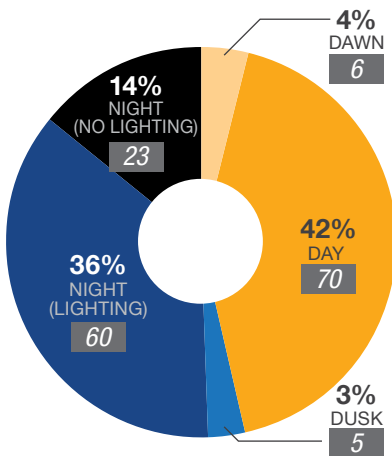
From 2014 to 2018, most fatal young driver crashes occurred during the hours of 6:00 PM to 8:59 PM, totaling 21%. Fifty percent of fatal young driver crashes took place at night in areas with and without street lighting.

Fatal young driver crashes occurred most frequently on Saturdays. The largest percent of fatal young driver crashes took place in the months of May and October, with a total of 26%.

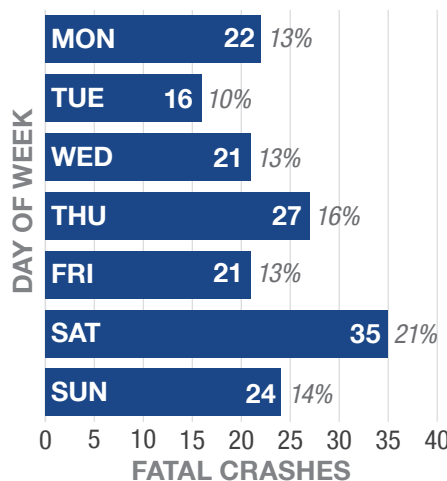
Fatal Young Driver Crashes by Time of Day



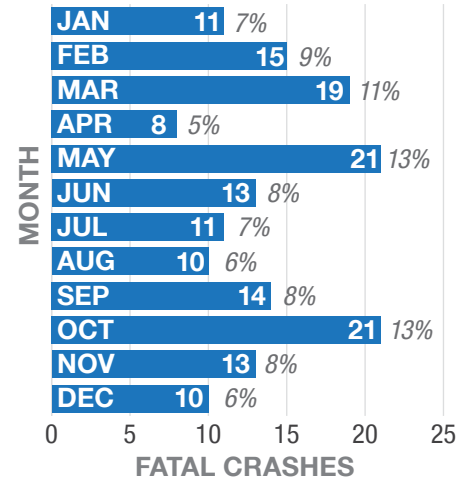
Lighting at Time of Fatal Young Driver Crash*



Fatal Young Driver Crashes by Day of Week



Fatal Young Driver Crashes by Month of Year

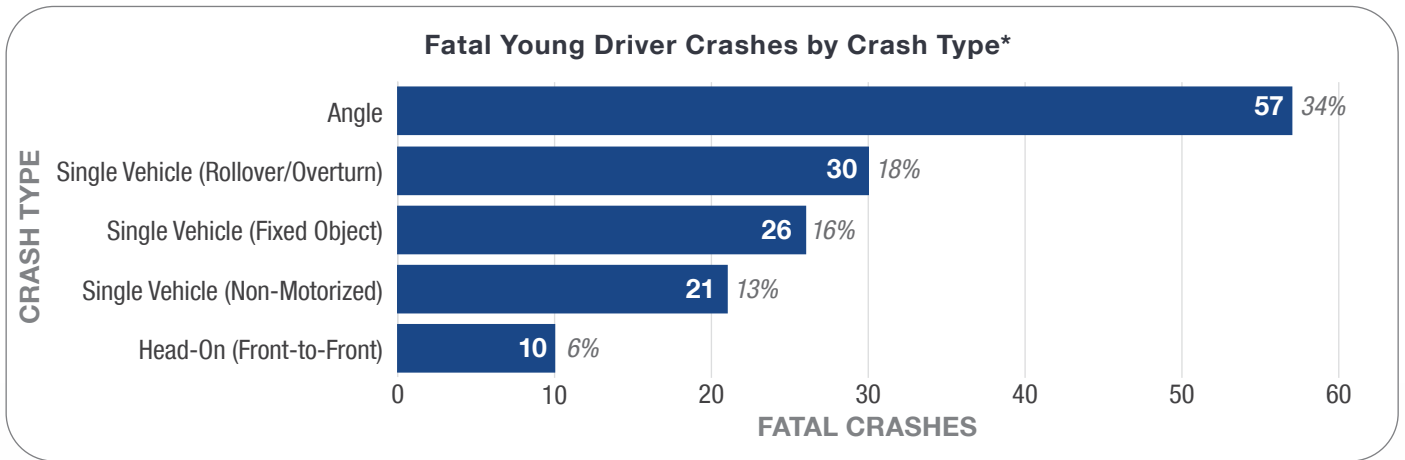


*Does not include values that are unknown or missing



Why?

From 2014 to 2018, fatal young driver crashes most frequently involved a motor vehicle hitting another motor vehicle in an angle crash or a motor vehicle rolling over.



*Does not include values that are unknown or missing or data categories with low representation

