

MOTORCYCLE CRASHES

19.2% of Nevada's total fatalities.

Fatal motorcycle crashes are fatal crashes involving a motorcyclist where one or more people on a motorcycle were killed in the crash. The FARS data uses the attribute "body type (BODY_TYP)" in the vehicle data set to identify if a motorcycle was involved, and attribute "deaths" in the vehicle data set to determine that one or more people on a motorcycle died. Eight attribute codes were used: two-wheel motorcycle, three-wheel motorcycle (two rear wheels), off-road motorcycle, motor scooter, unenclosed three-wheel motorcycle/unenclosed autocycle (one rear wheel), enclosed three-wheel motorcycle/enclosed autocycle (one rear wheel), unknown three wheel motorcycle type, and unknown motorcycle. If a fatal crash had any of the listed attribute codes assigned and one or more people on a motorcycle died in the crash, the crash was deemed a fatal motorcycle crash.

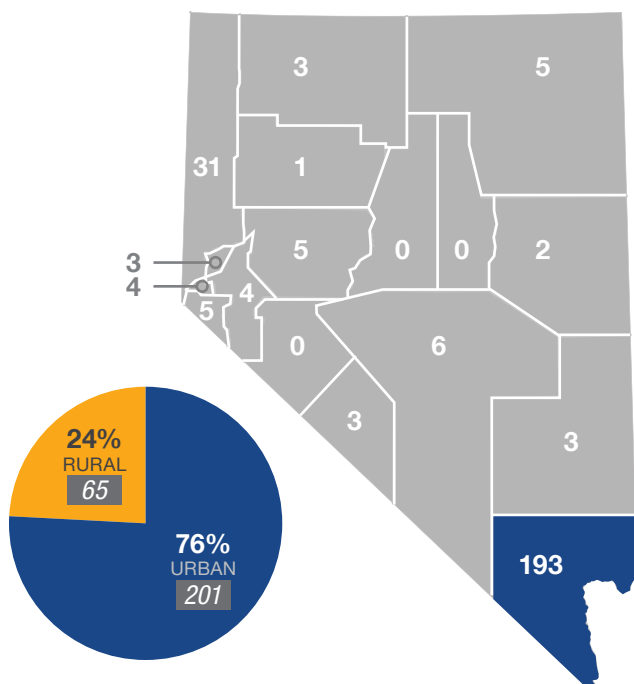
What?

Between 2014 to 2018, there were **305 fatalities and 268 fatal motorcycle crashes** on Nevada roadways.

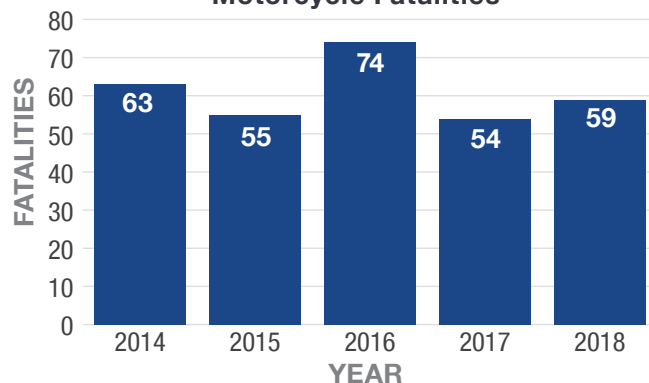
Where?

Between 2014 and 2018, more than 70% of fatal motorcycle crashes occurred on urban roadways. Clark County reported the highest number of fatal motorcycle crashes in Nevada.

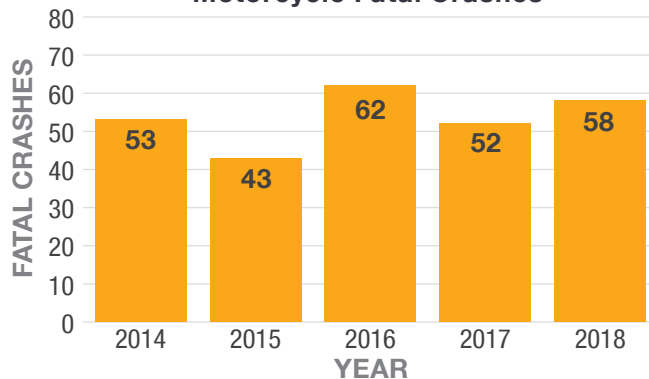
Location of Fatal Motorcycle Crashes*



Motorcycle Fatalities**



Motorcycle Fatal Crashes



*Does not include values that are unknown or missing

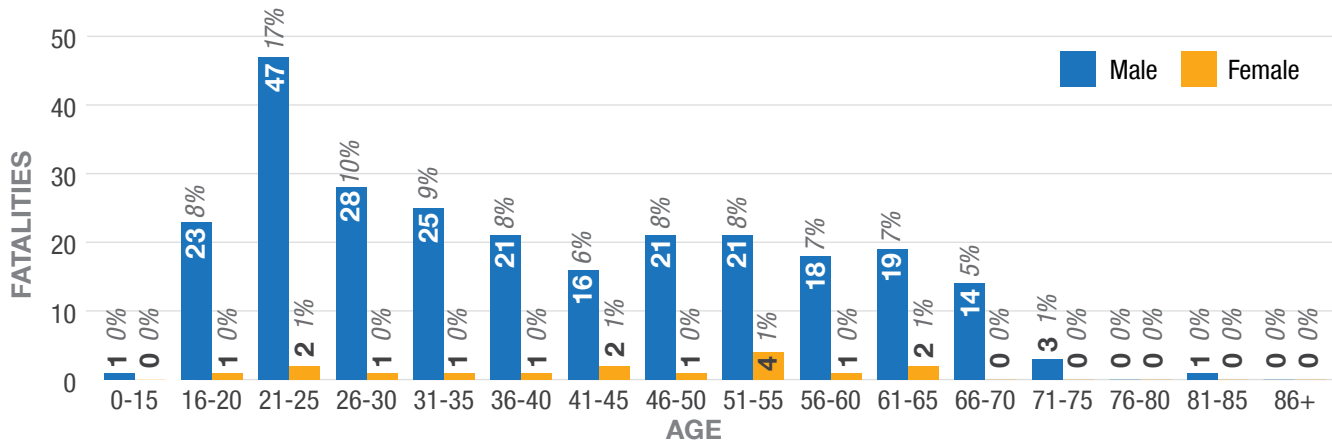
**This chart has been modified to match the NHTSA STSI summary



Who?

Between 2014 and 2018, males ages 21 to 25 years old were the largest reported age group for motorcycle driver and passenger fatalities.

Age/Gender Breakdown of Motorcycle Driver and Passenger Fatalities*

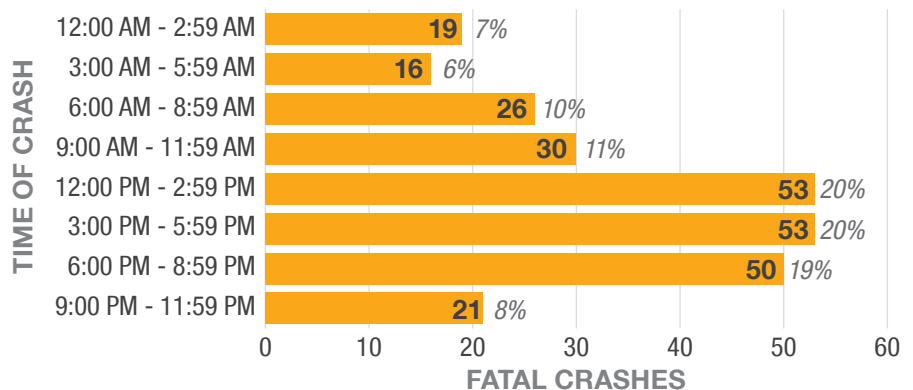


When?

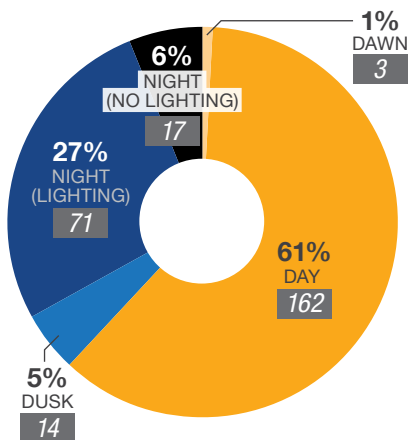
The majority of fatal motorcycle crashes occurred between the hours of 12:00 PM and 8:59 PM, while 61% of the time the officer reported that the fatal crash took place during the day.

Thirty-seven percent of fatal motorcycle crashes occurred on the weekends. Fatal motorcycle crashes took place most frequently in September.

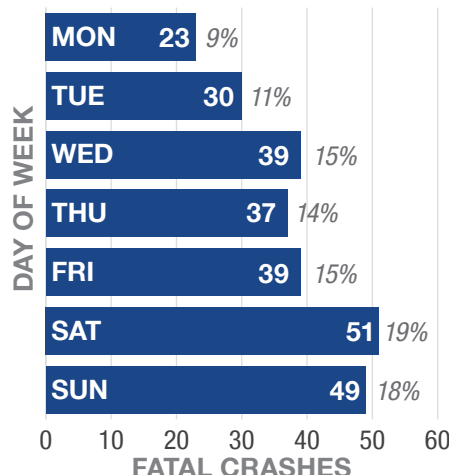
Fatal Motorcycle Crashes by Time of Day



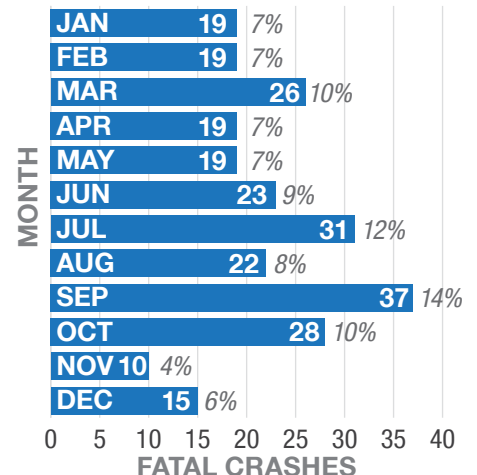
Lighting at Fatal Time of Motorcycle Crash*



Fatal Motorcycle Crashes by Day of Week



Fatal Motorcycle Crashes by Month of Year

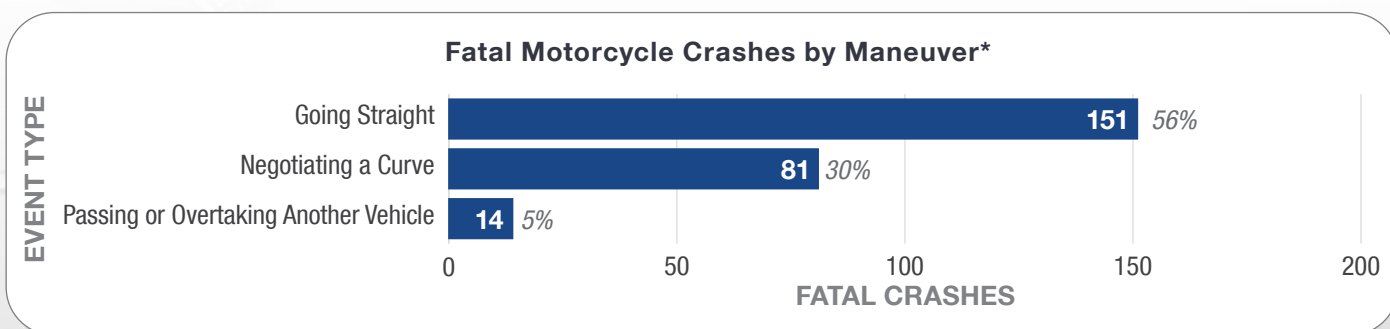
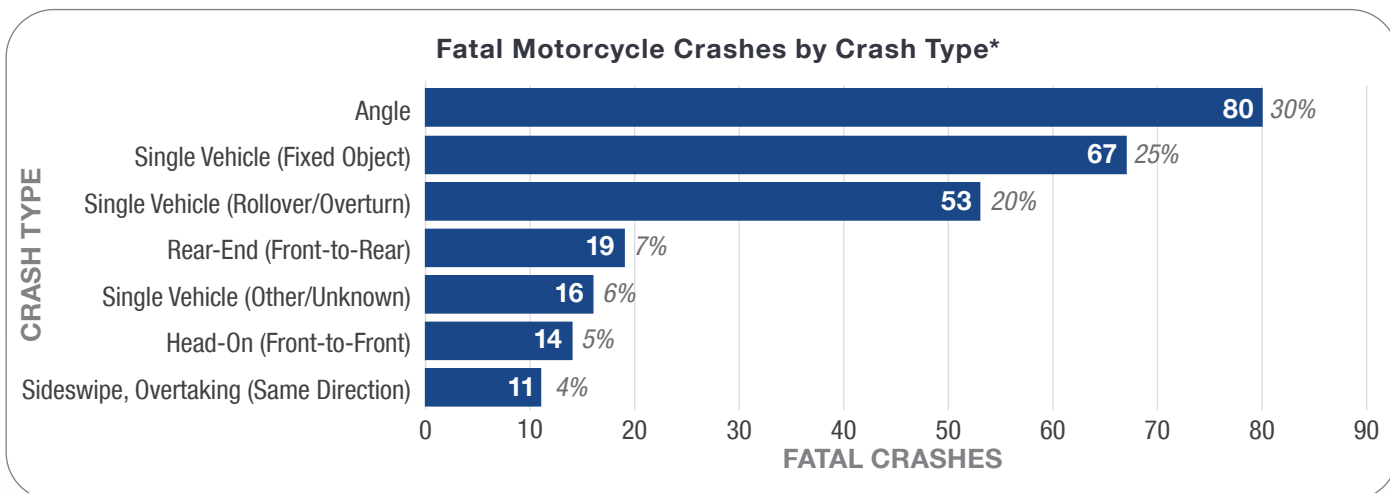


*Does not include values that are unknown or missing



Why?

From 2014 to 2018, 30% of motorcycle crashes were angle crashes. The most frequent maneuver of fatal motorcycle crashes was going straight (56%).



*Does not include values that are unknown or missing or data categories with low representation



HELMET USE HELMETED MOTORCYCLISTS

15.2% of Nevada's total fatalities.

The values presented in the fatalities and fatal crash charts is equivalent to the published NHTSA STSI values. However, from 2013 to 2016, the published NHTSA STSI values appear to underreport the number of helmeted motorcycle crashes, based on the queries performed on the raw FARS data. Thus, the crash summaries performed were expanded to eliminate the restraint system values of five (DOT-Compliant Motorcycle Helmet) and 16 (Helmet, Other than DOT-Compliant Motorcycle Helmet). By eliminating these data sets, we were able to provide data that is classified by FARS as a helmeted motorcycle crash.

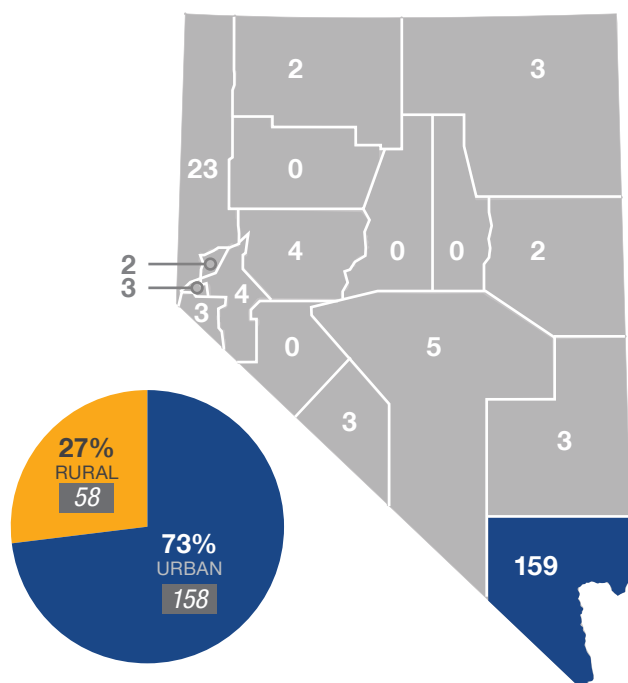
What?

Between 2014 and 2018, a total of **242 fatalities and 216 helmeted motorcyclist fatal crashes occurred** in the state of Nevada.

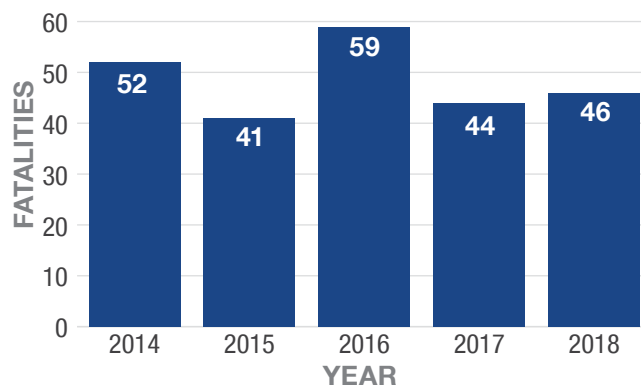
Where?

Between 2014 and 2018, over 70% of fatal helmeted motorcyclist crashes occurred on urban roadways. Clark County reported the highest number of fatal helmeted motorcyclist crashes in Nevada.

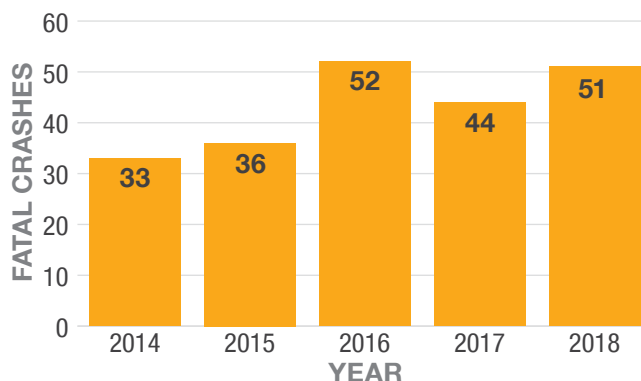
Location of Fatal Helmeted Motorcyclist Crashes



Helmeted Motorcyclist Fatalities*



Helmeted Motorcyclist Fatal Crashes**



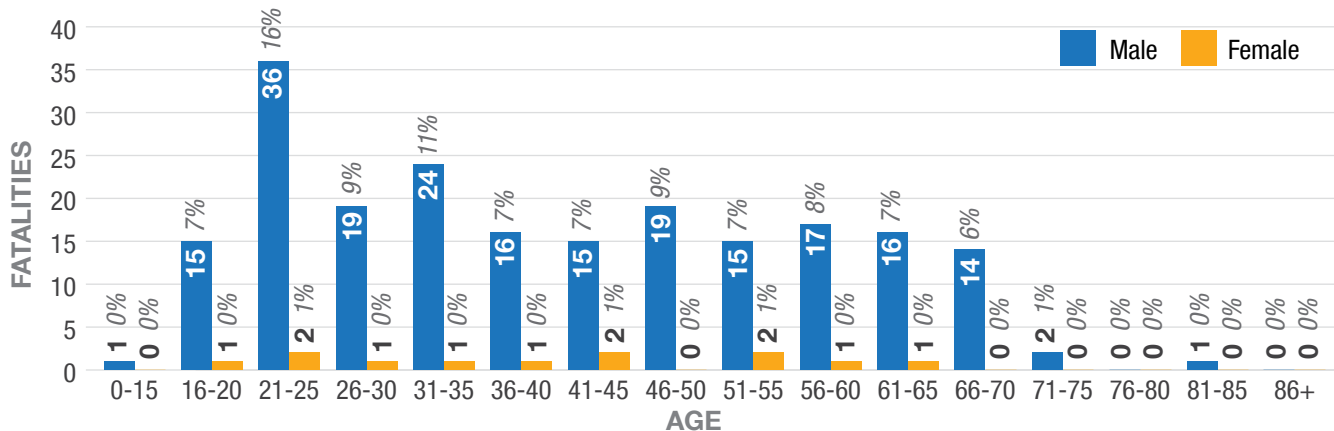
*These charts have been modified to match the NHTSA STSI summary

**In 2018, the number of fatal crashes is higher than the number of fatalities due to adjusting the fatality values to match NHTSA STSI

Who?

Males ages 21 to 25 were the highest reported age group for helmeted motorcyclist fatalities between 2014 and 2018.

Age/Gender Breakdown of Helmeted Motorcyclist Fatalities

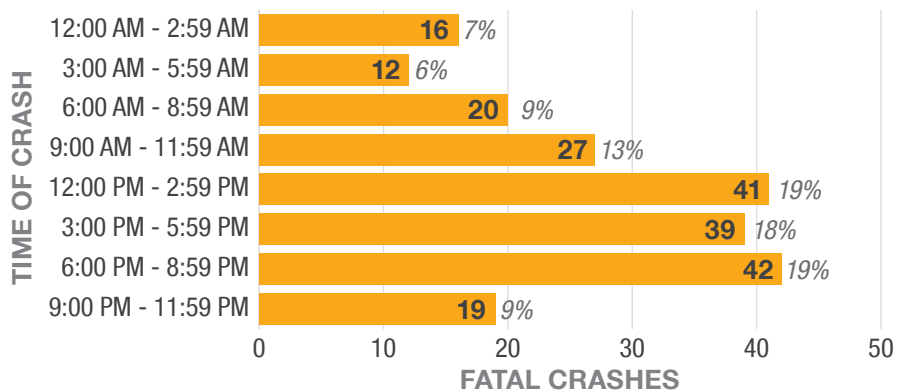


When?

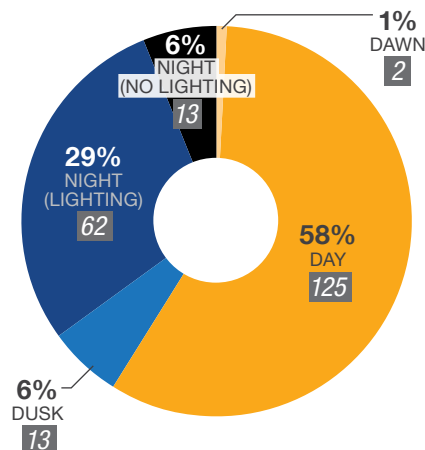
The most reported time frames for fatal helmeted motorcyclist crashes were 12:00 PM to 2:59 PM and 6:00 PM to 8:59 PM. Nearly 60% of fatal helmeted motorcyclist crashes occurred during the day.

Between 2014 and 2018, the weekends reported the most fatal helmeted motorcyclist crashes (37%). September reported the greatest number crashes.

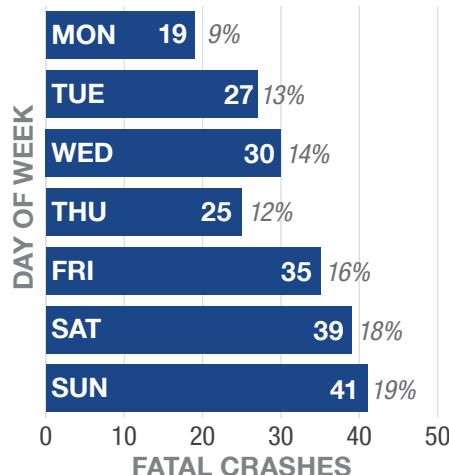
Fatal Helmeted Motorcyclist Crashes by Time of Day



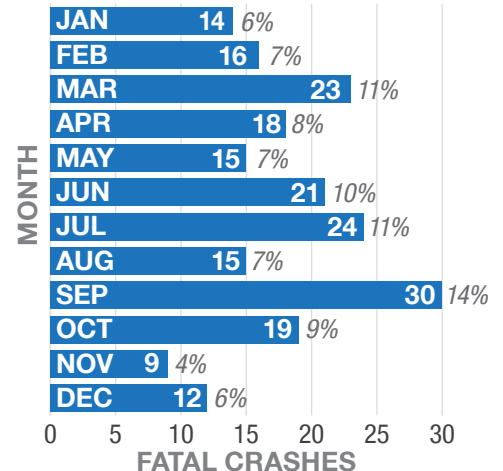
Lighting at Time of Fatal Helmeted Motorcyclist Crash*



Fatal Helmeted Motorcyclist Crashes by Day of Week



Fatal Helmeted Motorcyclist Crashes by Month of Year



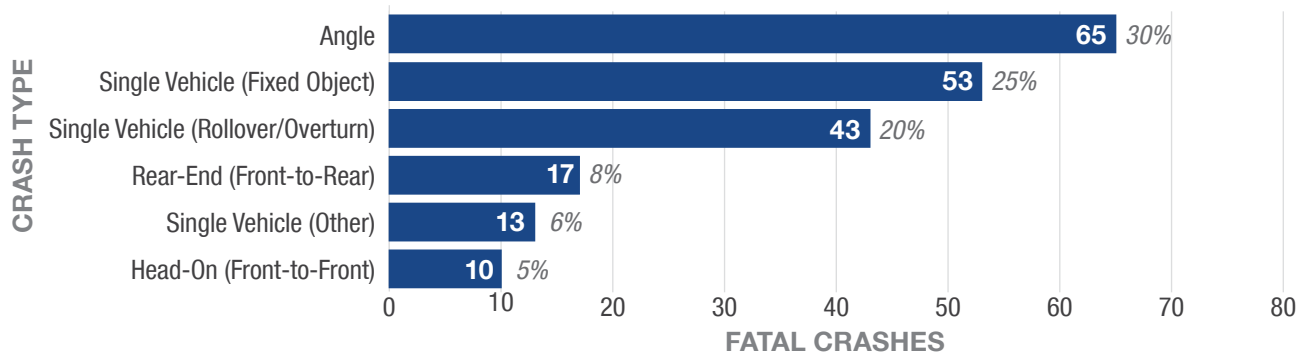
*Does not include values that are unknown or missing



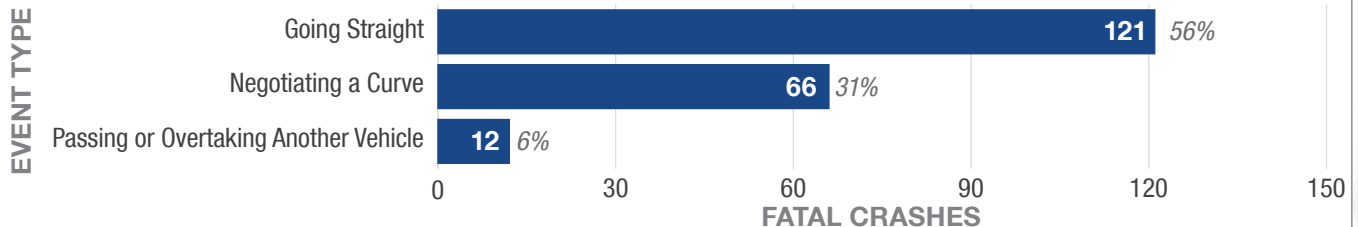
Why?

From 2014 to 2018, fatal helmeted motorcyclist crashes involving a motorcycle being struck by another motor vehicle in an angle crash was the highest reported crash type. The second highest reported crash type was a motorcycle striking a fixed object. Nearly 60% of fatal helmeted motorcyclist crashes involved the vehicle maneuver going straight.

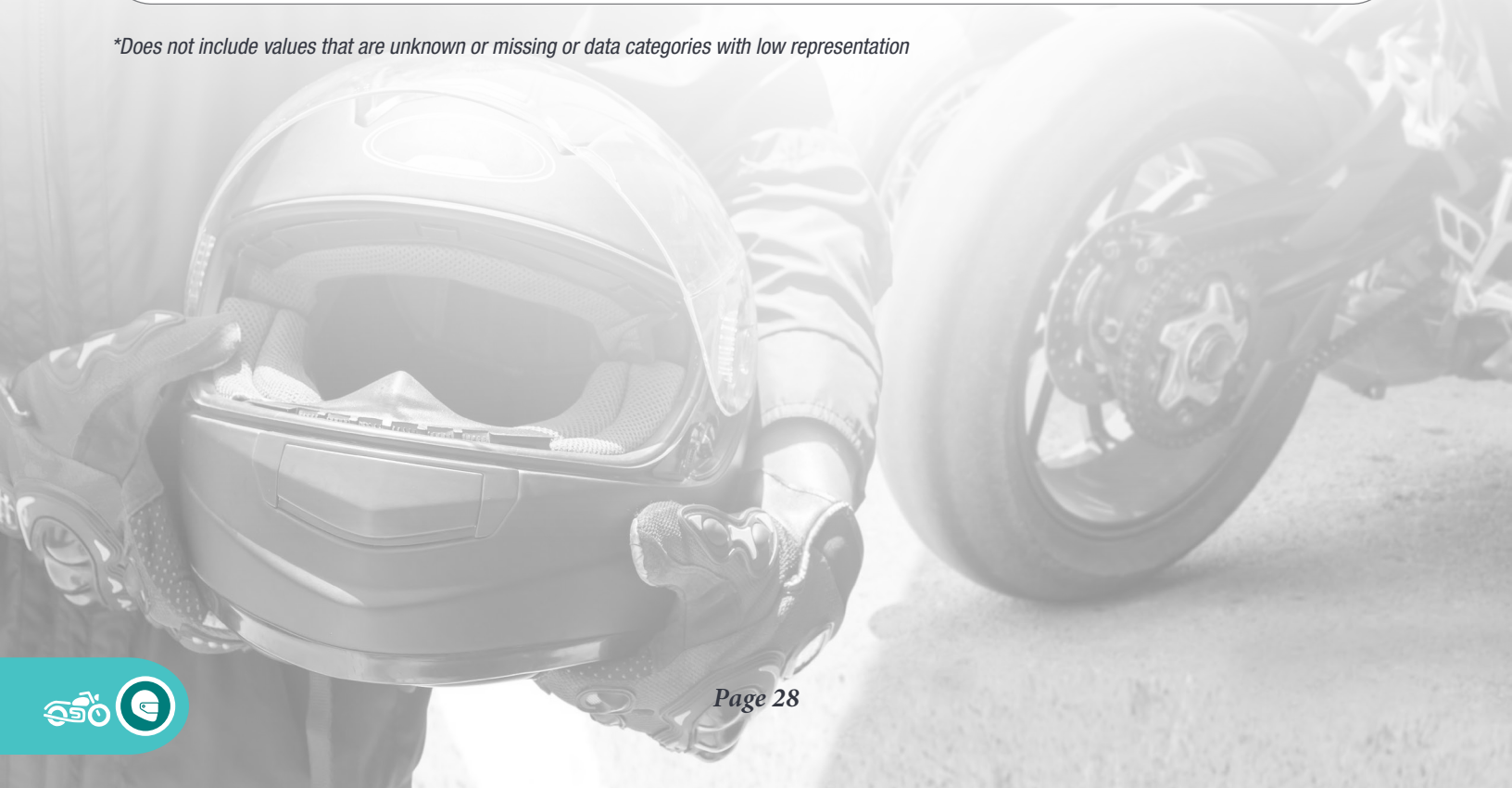
Fatal Helmeted Motorcyclist Crashes by Crash Type*

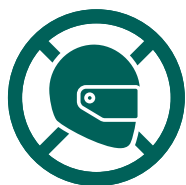


Fatal Helmeted Motorcyclist Crashes by Motorcycle Maneuver*



*Does not include values that are unknown or missing or data categories with low representation





HELMET USE UNHELMETED MOTORCYCLISTS

3.0% of Nevada's total fatalities.

The values presented in the fatalities and fatal crash charts is equivalent to the published NHTSA STSI values. However, from 2013 to 2016, the published NHTSA STSI values appear to underreport the number of unhelmeted motorcycle crashes, based on the queries performed on the raw FARS data. Thus, the crash summaries performed were expanded to eliminate the restraint system values of five (DOT-Compliant Motorcycle Helmet) and 16 (Helmet, Other than DOT-Compliant Motorcycle Helmet). By eliminating these data sets, we were able to provide data that is classified by FARS as an unhelmeted motorcycle crash.

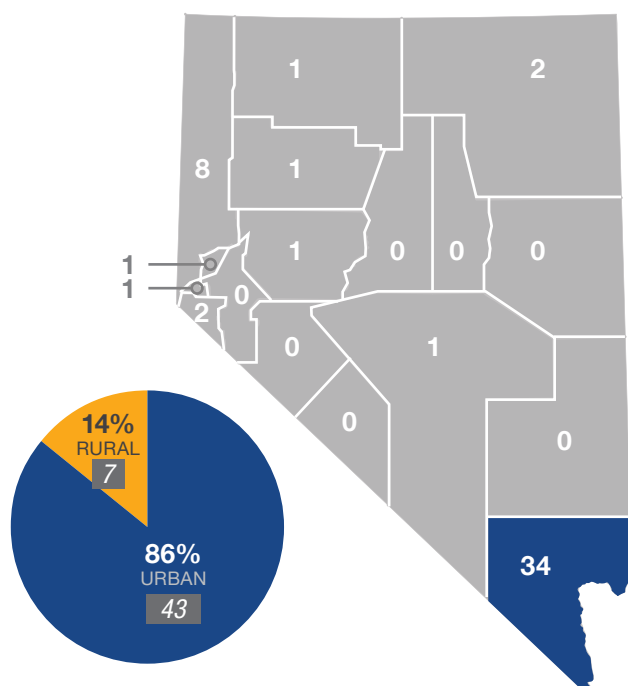
What?

Between 2014 and 2018, a total of **48 fatalities and 52 unhelmeted motorcyclist fatal crashes occurred** in the state of Nevada.

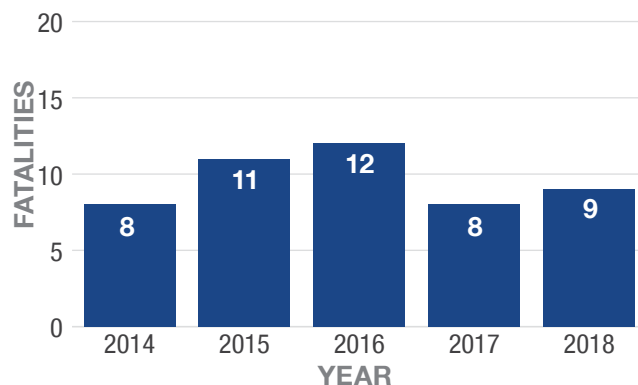
Where?

Between 2014 and 2018, 86% of fatal unhelmeted motorcyclist crashes occurred on urban roadways. Clark County reported the highest number of fatal unhelmeted motorcyclist crashes in Nevada.

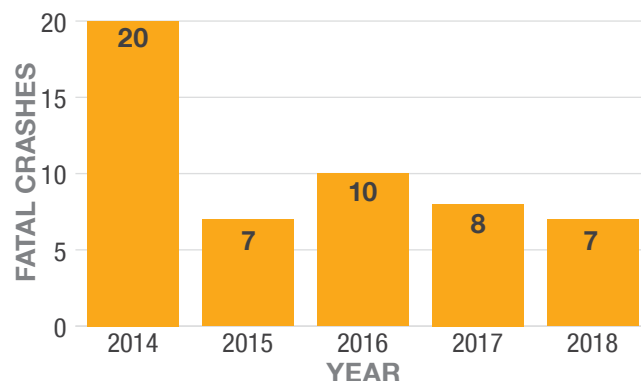
Location of Fatal Unhelmeted Motorcyclist Crashes*



Unhelmeted Motorcyclist Fatalities**



Unhelmeted Motorcyclist Fatal Crashes***



*Does not include values that are unknown or missing

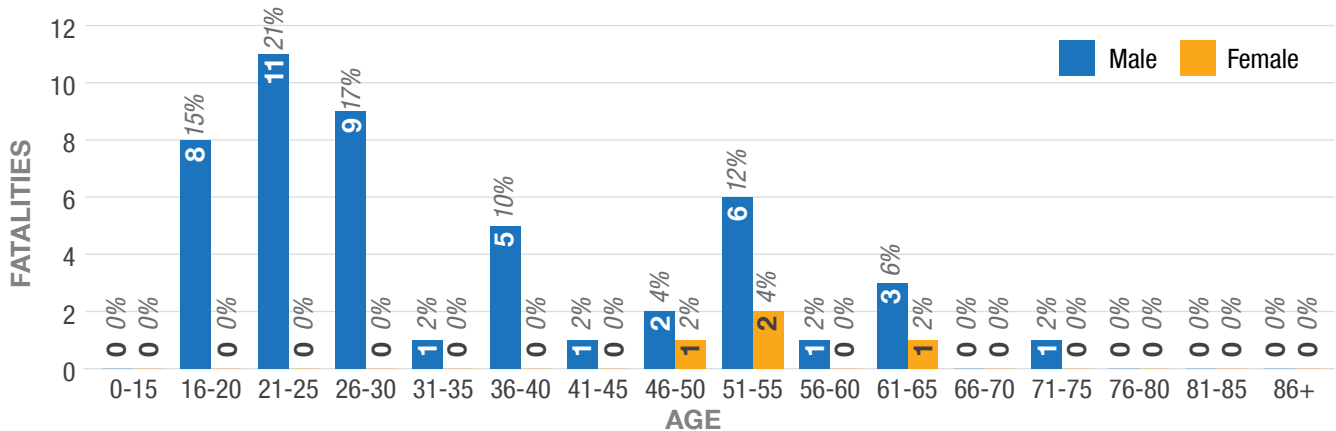
**These charts have been modified to match the NHTSA STSI summary

***In 2014, the number of fatal crashes is higher than the number of fatalities due to adjusting the fatality values to match NHTSA STSI

Who?

Males ages 21 to 25 were the highest reported age group for unhelmeted motorcyclist fatalities. Zero female fatalities, compared with 11 male fatalities, were reported between 2014 and 2018.

Age/Gender Breakdown of Unhelmeted Motorcyclist Fatalities

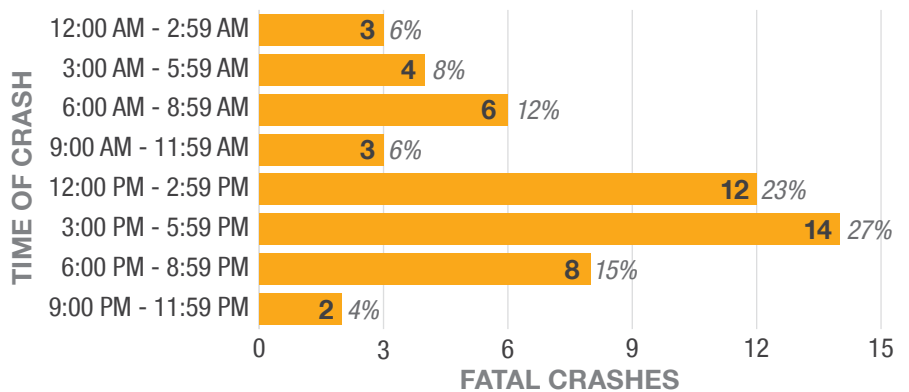


When?

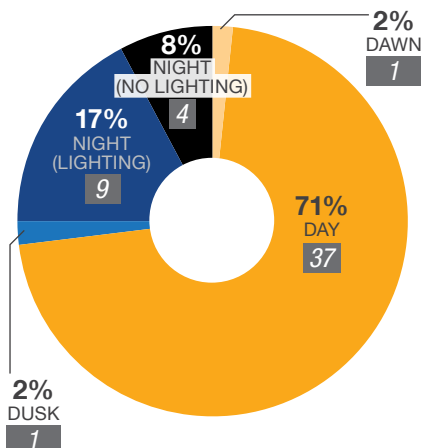
The most reported time frame for fatal unhelmeted motorcyclist crashes was 3:00 PM to 5:59 PM. More than 70% of fatal unhelmeted motorcyclist crashes occurred during daylight.

Between 2014 and 2018, Thursday and Saturday reported the most fatal unhelmeted motorcyclist crashes (23%). October reported the greatest number crashes.

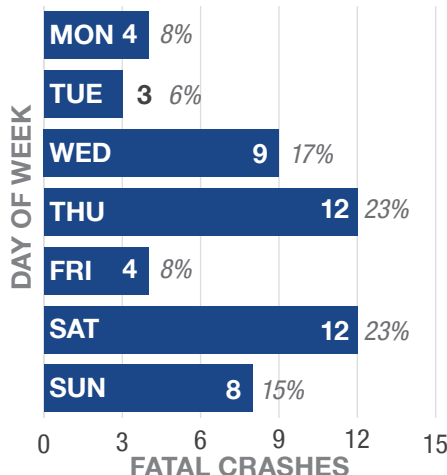
Fatal Unhelmeted Motorcyclist Crashes by Time of Day



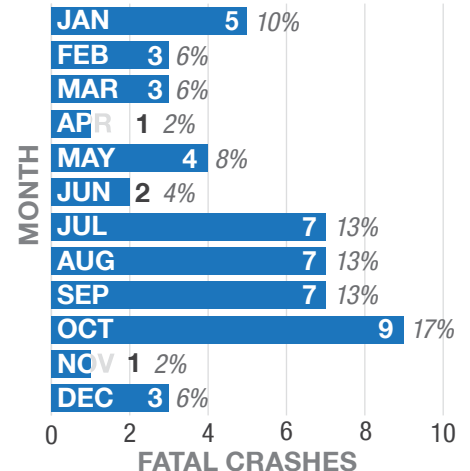
Lighting at Time of Fatal Unhelmeted Motorcyclist Crash



Fatal Unhelmeted Motorcyclist Crashes by Day of Week



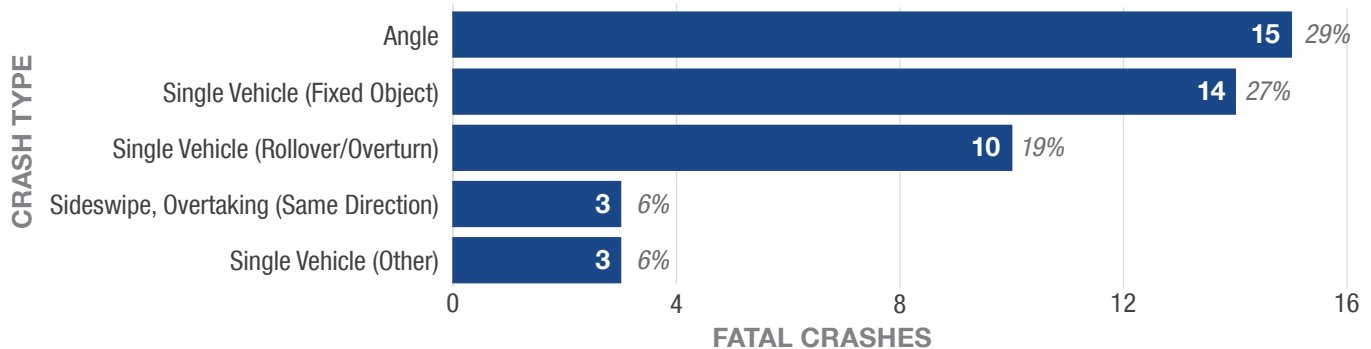
Fatal Unhelmeted Motorcyclist Crashes by Month of Year



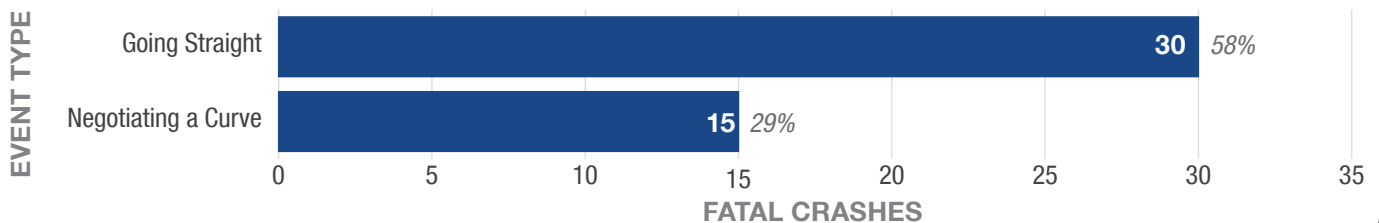
Why?

From 2014 to 2018, fatal unhelmeted motorcyclist crashes involving a motorcycle being struck by another motor vehicle in an angle crash was the highest reported crash type. The second highest reported crash type was a motorcycle striking a fixed object. More than half (58%) of fatal unhelmeted motorcyclist crashes involved the vehicle maneuver going straight.

Fatal Unhelmeted Motorcyclist Crashes by Crash Type*



Fatal Unhelmeted Motorcyclist Crashes by Motorcycle Maneuver*



*Does not include values that are unknown or missing or data categories with low representation

