



INTERSECTION CRASHES

31.2% of Nevada's total fatalities.

Intersection crash data includes all crashes where the reporting officer designates the crash location at an intersection. FARS data uses the attribute “relation to junction-specific location (RELJCT2)” to identify the crash location with respect to the presence in or proximity to roadway junctions or interchanges. For this analysis, the two attribute codes used were “intersection” and “intersection-related.” If a fatal crash was assigned either of the two attribute codes, the crash was deemed an intersection crash.

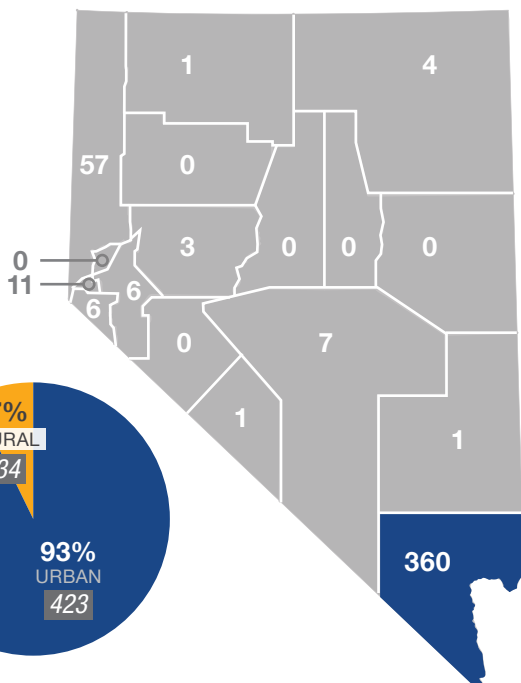
What?

From 2014 to 2018, the number of intersection fatalities and fatal crashes generally increased. A total of **495 fatalities and 457 fatal intersection crashes** occurred on Nevada roadways during that period.

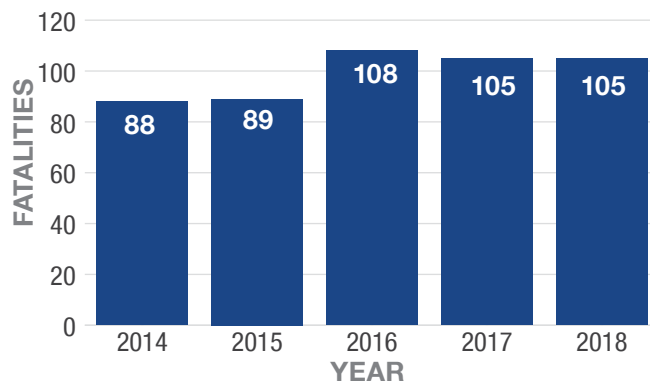
Where?

Between 2014 and 2018, more than 90% of fatal intersection crashes occurred on urban roadways. Clark County reported the highest number of fatal intersection crashes in Nevada.

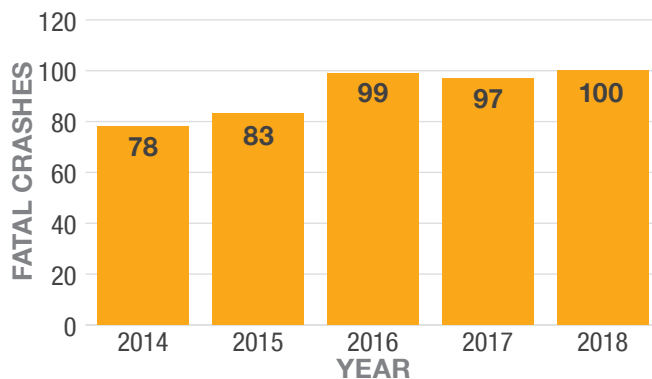
Location of Fatal Intersection Crashes



Intersection Fatalities



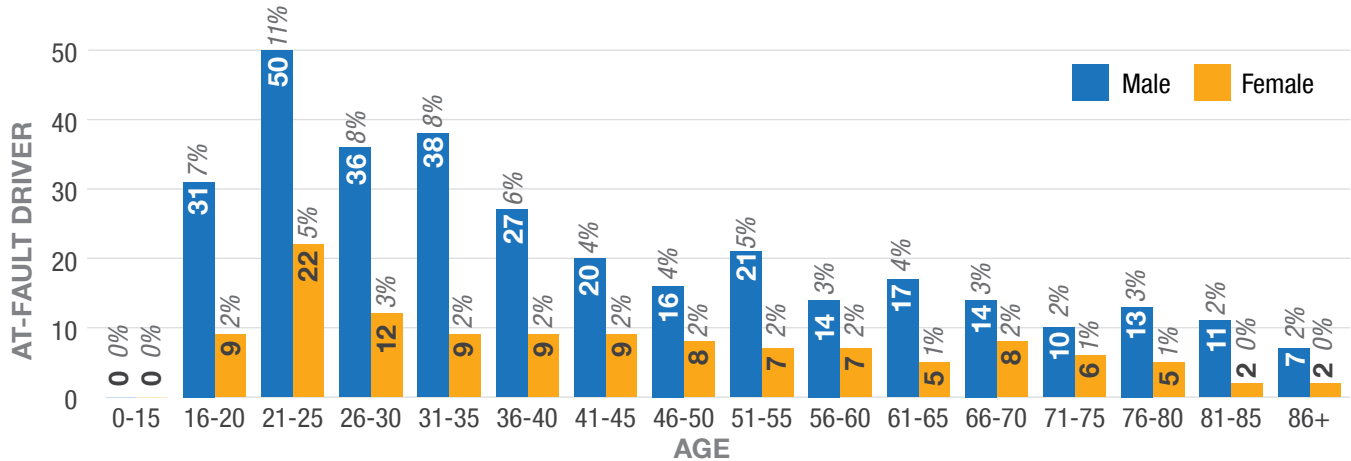
Intersection Fatal Crashes



Who?

Between 2014 and 2018, males ages 21 to 25 were the largest reported age group of at-fault drivers in fatal intersection crashes.

Age/Gender Breakdown of At-Fault Drivers in Fatal Intersection Crashes*

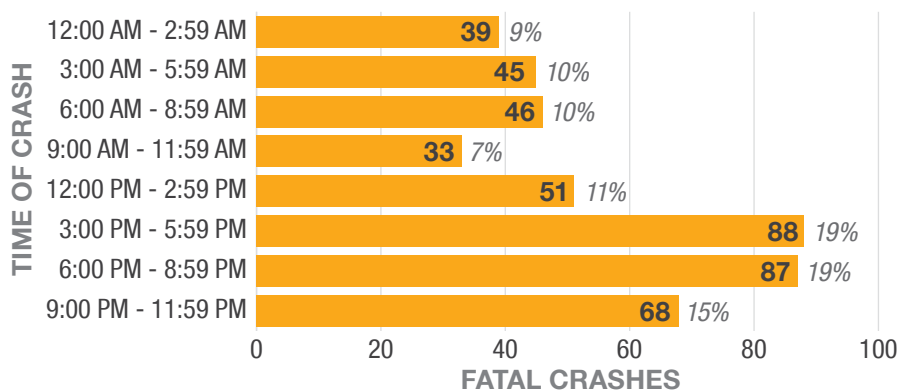


When?

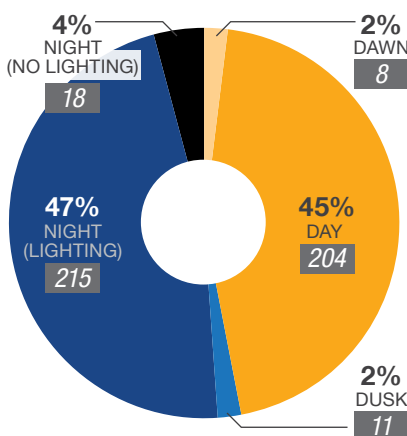
The hours of 3:00 PM and 8:59 PM had the greatest number of fatal intersection crashes. More than half of fatal intersection crashes took place at night in areas with and without street lighting.

Thirty-two percent of fatal intersection crashes occurred on the weekends. Fatal intersection crashes took place in the months of September and December most often; combined, those months comprised 20% of crashes.

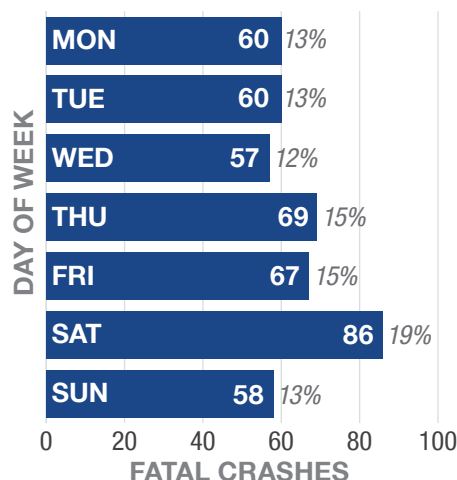
Fatal Intersection Crashes by Time of Day



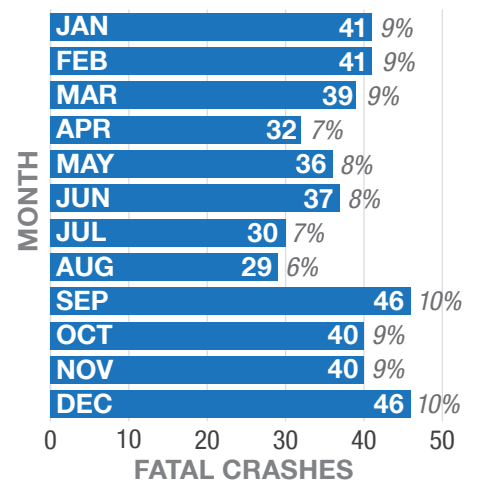
Lighting at Time of Fatal Intersection Crash*



Fatal Intersection Crashes by Day of Week



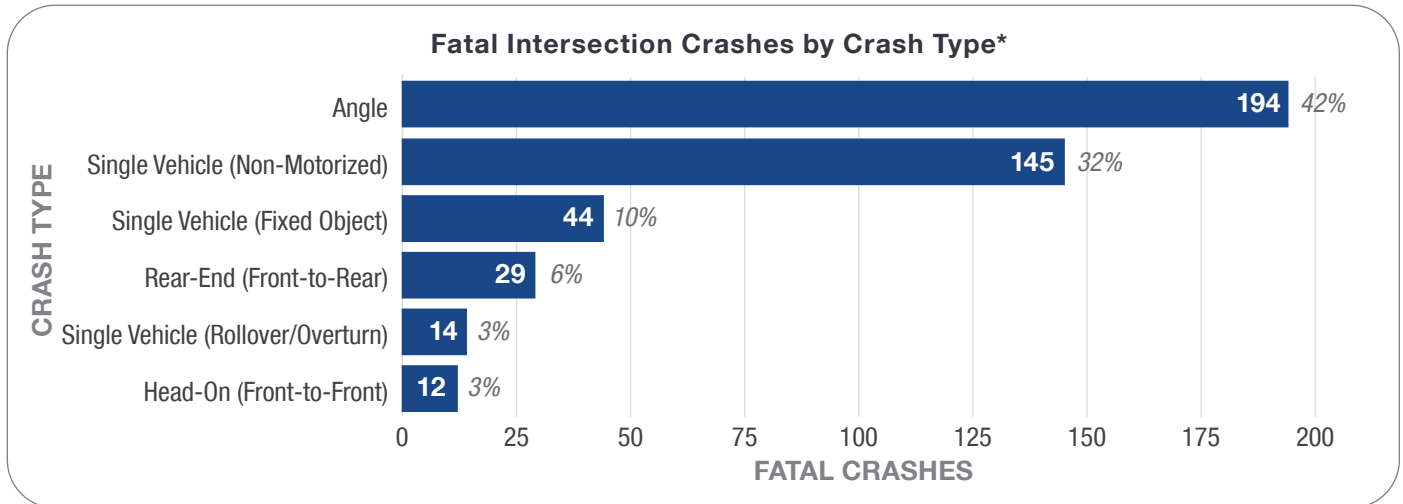
Fatal Intersection Crashes by Month of Year



*Does not include values that are unknown or missing

Why?

From 2014 to 2018, fatal intersection crashes most frequently involved a motor vehicle hitting another motor vehicle in an angle crash.



*Does not include values that are unknown or missing or data categories with low representation

