



IMPAIRED DRIVING CRASHES

46.9% of Nevada's total fatalities.

Impaired driving crashes are fatal crashes involving a driver with a BAC of 0.08 or greater and/or tested positive for drugs in their system. The FARS data uses the attribute “alcohol test result (ALC_RES)” in the person data set to report the BAC test result, and the attribute “drug test result (DRUGRES)” in the person data set to report the type of drug(s) present in a person’s system at the time of the crash. For this analysis, the following attribute codes were used for drug involvement: narcotic, depressant, stimulant, hallucinogen, cannabinoid, phencyclidine, anabolic steroid, and inhalant. If the driver in a fatal crash had either a BAC greater than or equal to 0.08 and/or had any of the listed drug attribute codes, the crash was deemed an impaired driving crash.

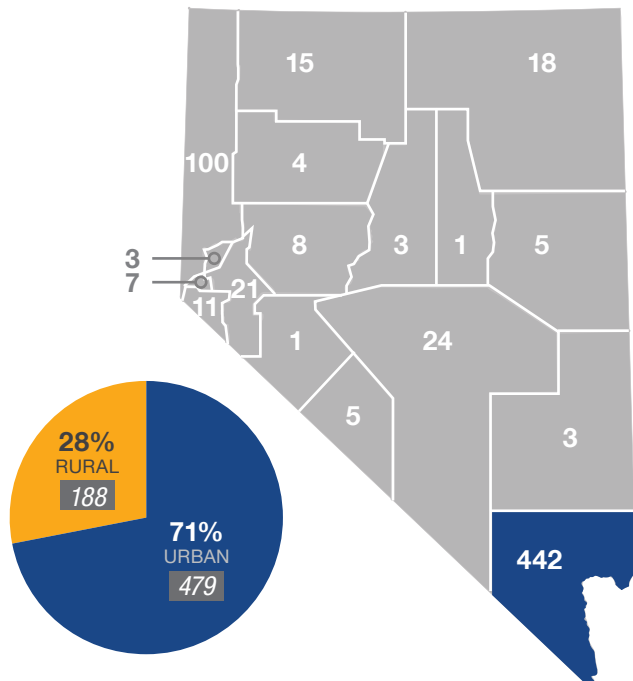
What?

Between 2014 to 2018, the number of impaired driving fatalities and fatal crashes generally decreased. A total of **745 fatalities and 671 fatal impaired driving crashes** occurred on Nevada roadways during that time.

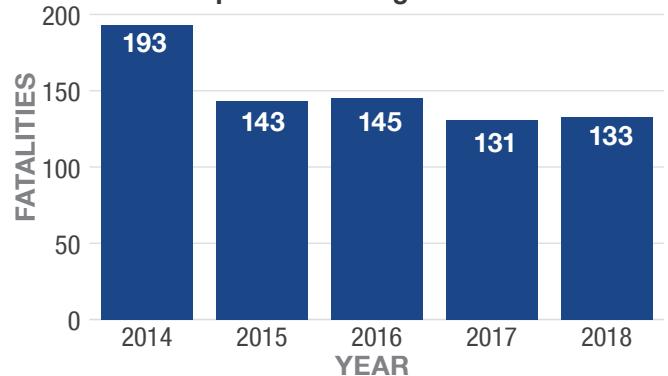
Where?

From 2014 to 2018, more than 70% of fatal impaired driving crashes occurred on urban roadways. Clark County reported the highest number of fatal impaired driving crashes in Nevada.

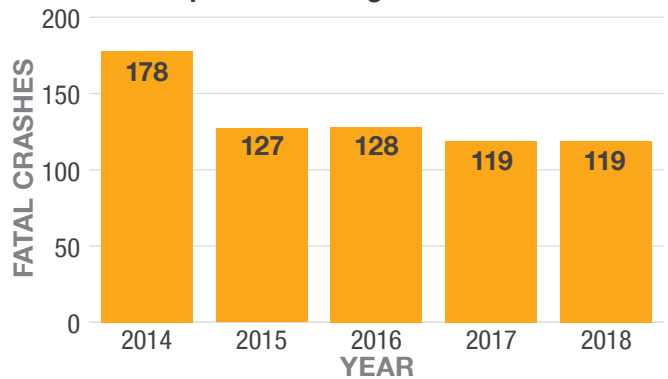
Location of Fatal Impaired Driving Crashes*



Impaired Driving Fatalities



Impaired Driving Fatal Crashes



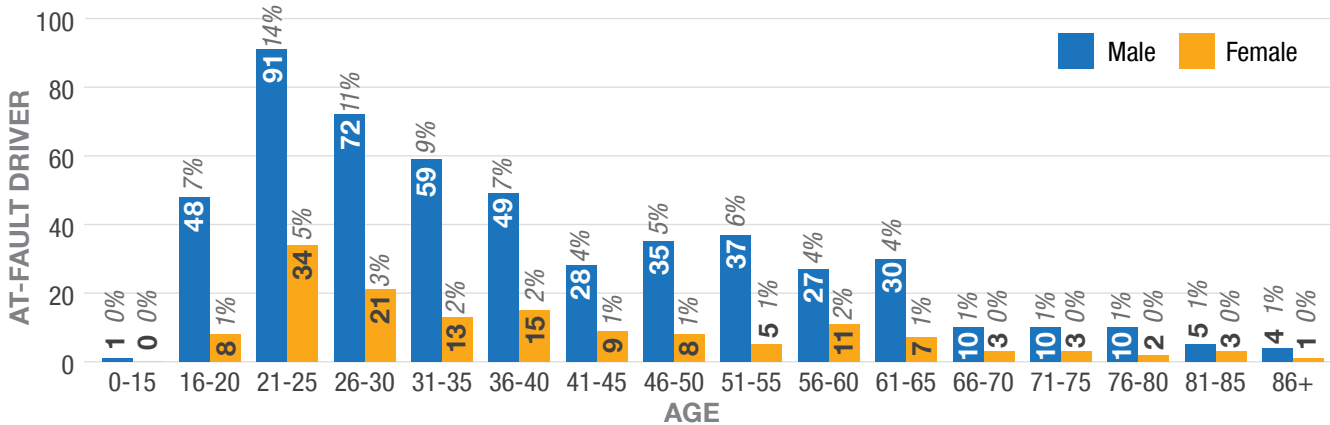
*Does not include values that are unknown or missing



Who?

Males ages 21 to 25 comprised the greatest number of at-fault drivers in fatal impaired driving crashes from 2014 to 2018.

Age/Gender Breakdown of At-Fault Drivers in Impaired Driving Fatal Crashes*

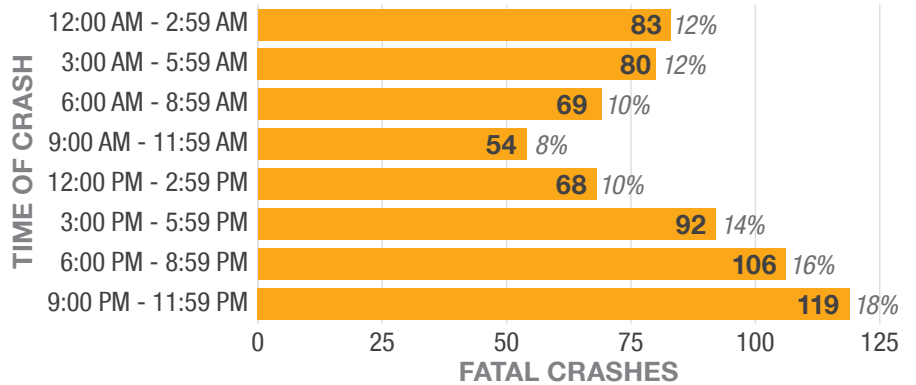


When?

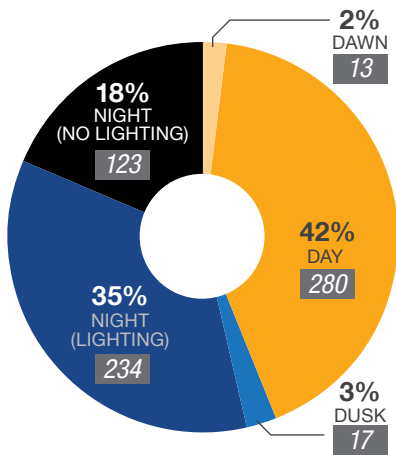
Nearly half of fatal impaired driving crashes took place between 3:00 PM and 11:59 PM, while 53% of the time the officer reported that the fatal crash took place at night in areas with and without street lighting.

From 2014 to 2018, 38% of fatal impaired driving crashes occurred on the weekends. These crashes occurred most frequently in the month of September.

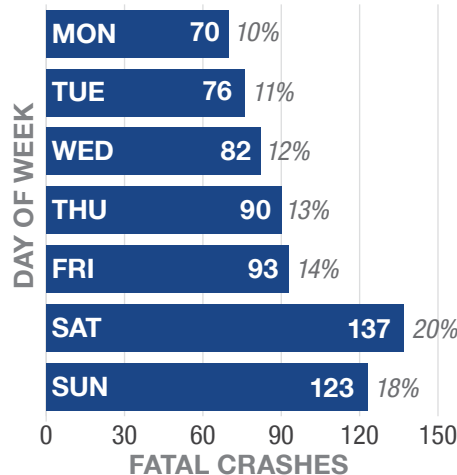
Fatal Impaired Driving Crashes by Time of Day



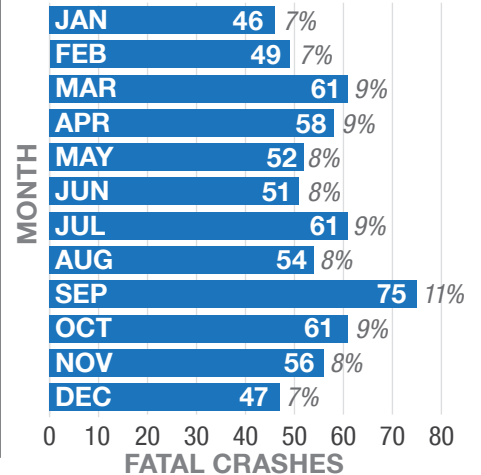
Lighting at Time of Impaired Driving Fatal Crash*



Fatal Impaired Driving Crashes by Day of Week



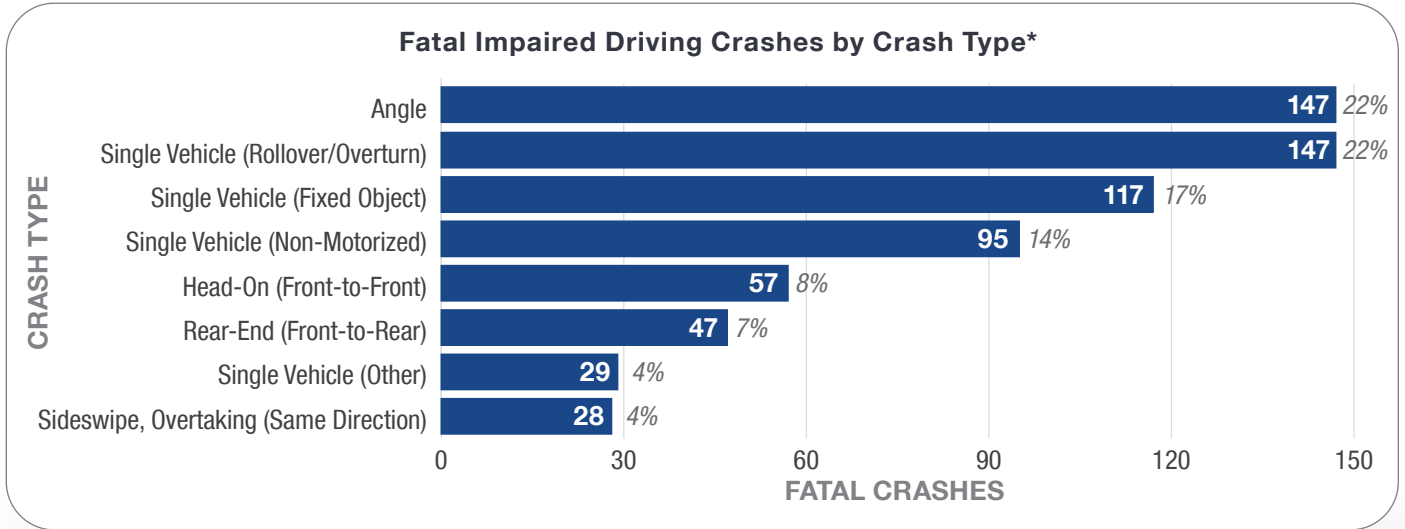
Fatal Impaired Driving Crashes by Month of Year



*Does not include values that are unknown or missing

Why?

From 2014 to 2018, 44% of fatal impaired driving crashes involved a motor vehicle being struck by another motor vehicle in an angle crash or rolling over.



**Does not include values that are unknown or missing or data categories with low representation*

