



DISTRACTED DRIVING CRASHES

3.9% of Nevada's total fatalities.

A distracted driving crash is a crash in which the driver of a motor vehicle involved in a fatal crash was distracted, and this contributed to the crash. The FARS data uses the attribute "driver distracted by (MDRDSTRD)" in the distracted (DISTRACT) data file to indicate what distracted the driver. For this analysis, all attribute codes for the attribute "driver distracted by" were used with the exception of "not distracted," "no driver present/unknown if driver present," "not reported," and "unknown if distracted." The other 19 attribute codes cover a range of situations and activities such as: while talking or listening to cellular phone, eating or drinking, careless/inattentive, etc. If a crash reported any of the 24 attribute codes, the crash was deemed a distracted driving crash. It is likely the number of recorded distracted driving crashes is much less than the actual number of distracted driving crashes due to the difficulty of a police officer being able to confirm a driver was distracted when they arrive at the crash scene.

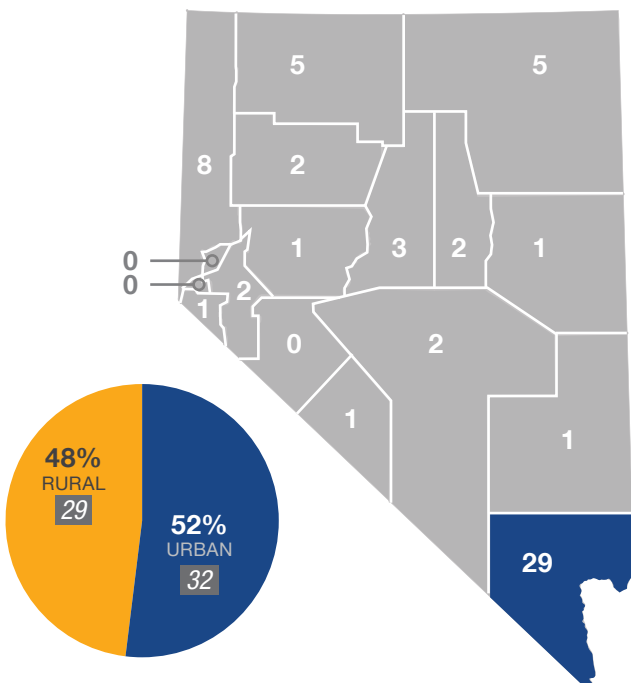
What?

Between 2014 and 2018, a total of **62 fatalities and 63 fatal distracted driving crashes** occurred in Nevada.

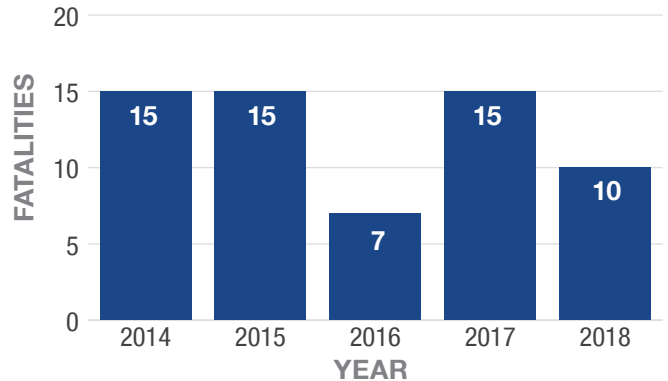
Where?

Between 2014 and 2018, 52% of fatal distracted driving crashes occurred on urban roadways. Clark County reported the greatest number of fatal distracted driving crashes in Nevada.

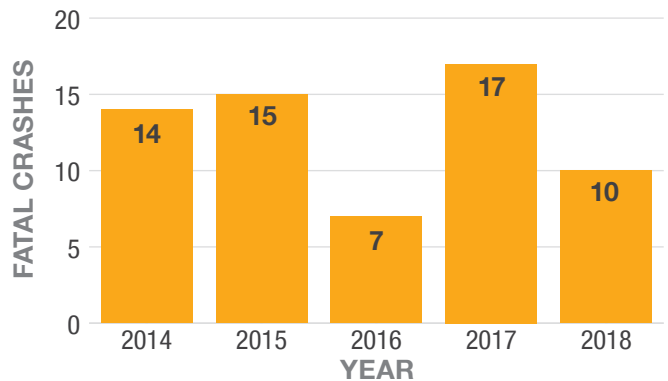
Location of Fatal Distracted Driving Crashes*



Distracted Driving Fatalities**



Distracted Driving Fatal Crashes***



*Does not include values that are unknown or missing

**These charts have been modified to match the NHTSA STSI summary

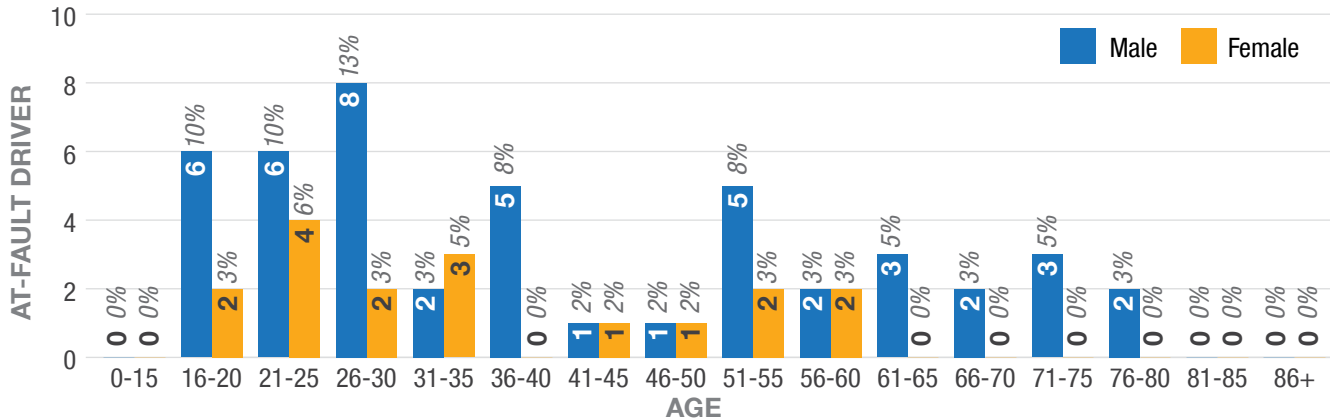
***In 2017, the number of fatal crashes is higher than the number of fatalities due to adjusting the fatality values to match NHTSA STSI



Who?

Males ages 26 to 30 were the largest reported age groups of at-fault drivers in fatal distracted driving crashes from 2014 to 2018.

Age/Gender Breakdown of At-Fault Driver in Fatal Distracted Driving Crashes

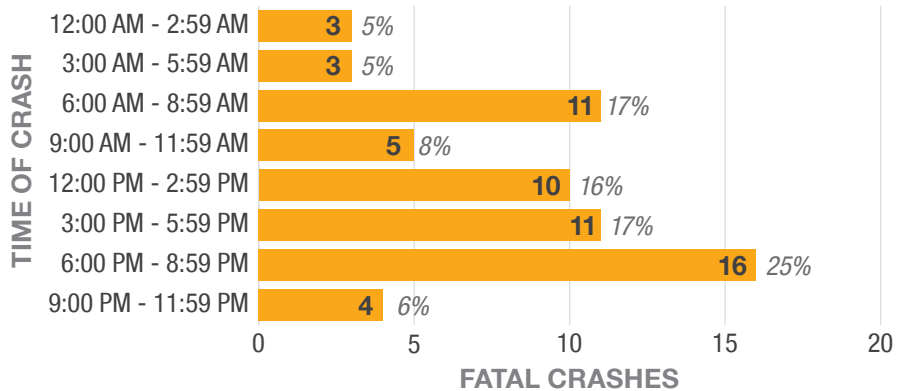


When?

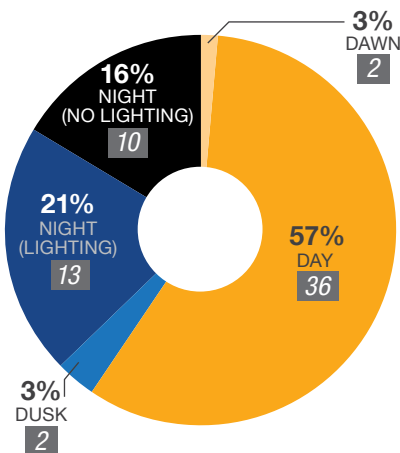
Fatal distracted driving crashes occurred most frequently between the hours of 6:00 PM and 8:59 PM. However, outside of this time frame, the majority of crashes (57%) took place during the day.

Between 2014 and 2018, most fatal distracted driving crashes occurred on Saturday. November was the highest reported month for fatal distracted driving crashes.

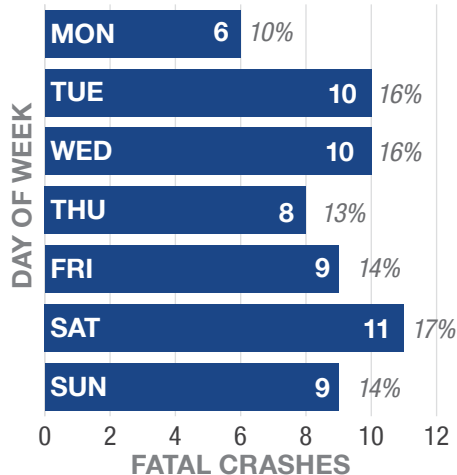
Fatal Distracted Driving Crashes by Time of Day



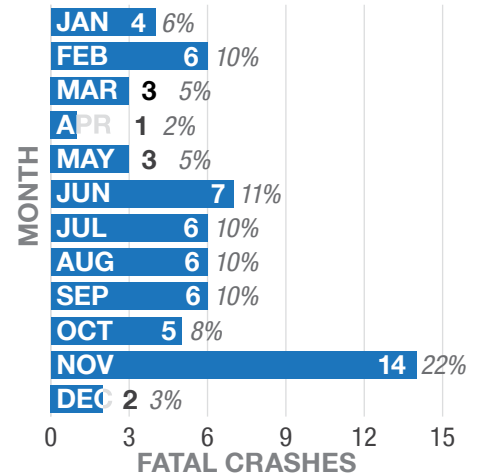
Lighting at Time of Fatal Distracted Driving Crash



Fatal Distracted Driving Crashes by Day of Week

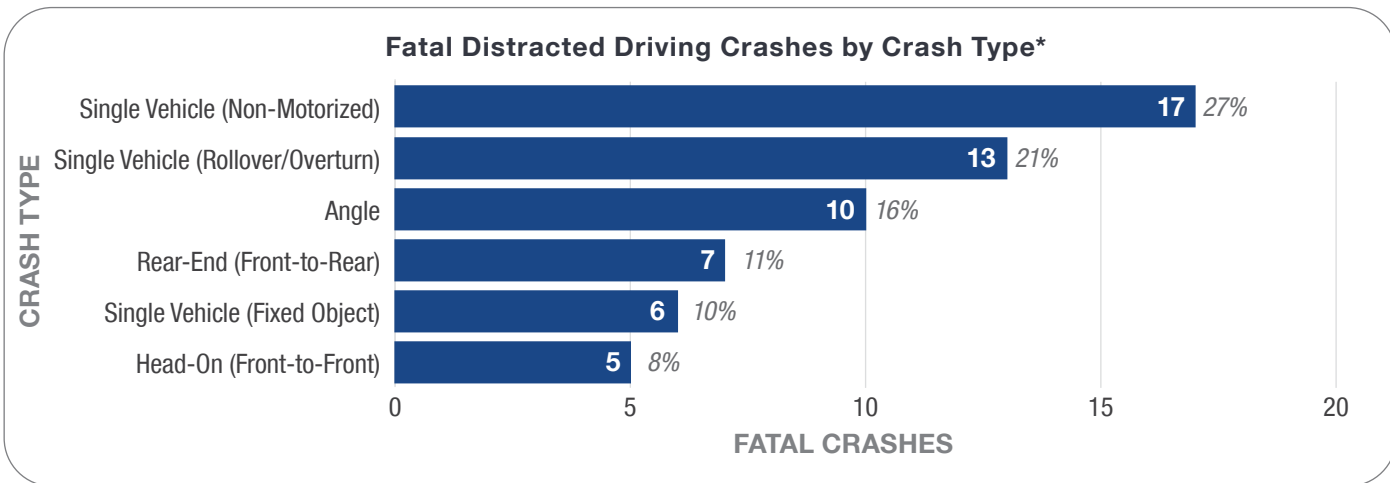


Fatal Distracted Driving Crashes by Month of Year



Why?

From 2014 to 2018, in fatal distracted driving crashes, a moving vehicle colliding with a non-motorized form of transportation, such as a bicycle or pedestrian, was reported more often than all other crash types.



*The values in the chart differ from the total due to eliminating data categories with low representation

